



2018

**ES 350**

OWNER'S MANUAL QUICK GUIDE

# Contents

The Quick Guide is not intended as a substitute for your *Owner's Manual*. We strongly encourage you to review the *Owner's Manual* and supplementary manuals so you will have a better understanding of your vehicle's capabilities and limitations.

<b>Air Conditioning System .....</b>	<b>70</b>
<b>Audio System (with Lexus Display Audio System) .....</b>	
Lexus Display Audio operation buttons.....	66
Using the steering wheel switches to change audio sources.....	66
Audio menu screen .....	67
Operating the audio system using the steering wheel switches.....	69
<b>Audio System (with navigation system)* .....</b>	
Audio control screen .....	57
Remote control (steering wheel audio switches).....	57
Basic operation.....	58
Radio .....	58
DVD player/CD player .....	59
Operating an iPod.....	60
<b>Automatic High Beam .....</b>	<b>32</b>
<b>Automatic Transmission .....</b>	<b>25</b>
<b>BSM (Blind Spot Monitor) .....</b>	<b>45</b>
<b>Cruise Control .....</b>	<b>37</b>
<b>Door Locks .....</b>	<b>88</b>
<b>Driving Mode Select Switch.....</b>	<b>46</b>
<b>Driving Position Memory .....</b>	<b>19</b>
<b>Dynamic Radar Cruise Control .....</b>	<b>39</b>
<b>Eco Driving Indicator .....</b>	<b>30</b>
<b>Engine (Ignition) Switch .....</b>	<b>22</b>

\*: These features may be operated by Voice Command (See P.73)

Floor mat installation.....	11
Front Seats .....	17
Fuel Consumption Screen .....	12
Fuel Tank Cap .....	92
Garage Door Opener .....	81
<b>Hands-free System For Cellular Phone (with Lexus Display Audio System)</b>	
How to register a Bluetooth® phone .....	63
Registering favorites.....	63
Dialing.....	63
Dialing from the phonebook .....	63
When the phonebook is empty.....	64
Dialing from favorites.....	64
To answer the phone.....	65
To refuse a call .....	65
Operating a phone using the steering wheel switches.....	65
<b>Hands-free System For Cellular Phone (with navigation system)*</b>	
Bluetooth® phone pairing .....	54
Contact transfer .....	55
Calling by name.....	56
Receiving a call .....	56
Steering switches .....	56

\*: These features may be operated by Voice Command (See P.73)

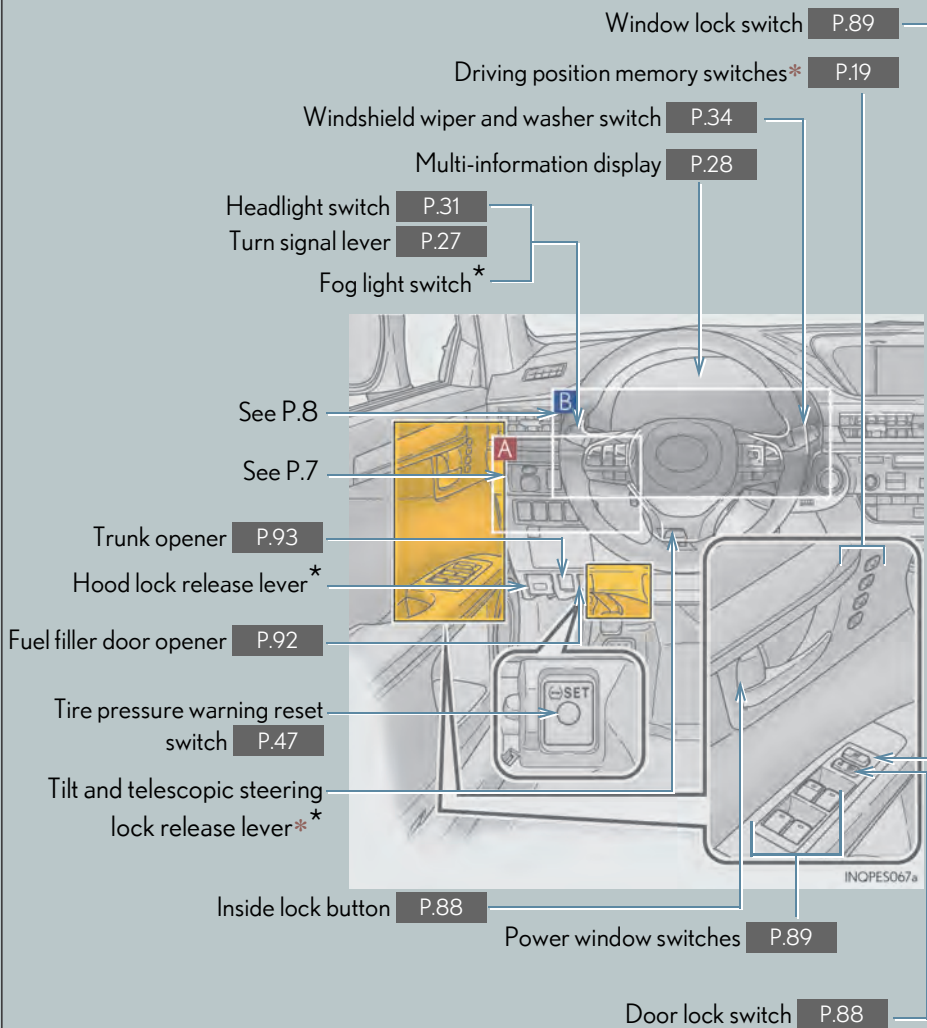
Headlights .....	31
Head Restraints .....	18
Intuitive Parking Assist.....	44
Keys .....	14
LDA (Lane Departure Alert with steering control) .....	43
Lexus Display Audio Controller (with Lexus Display Audio System).....	61
LEXUS Enform .....	85
LEXUS Enform Safety Connect .....	83
Moon Roof.....	90
Multi-information Display.....	28
Navigation System*	
Register home.....	52
Destination search .....	53

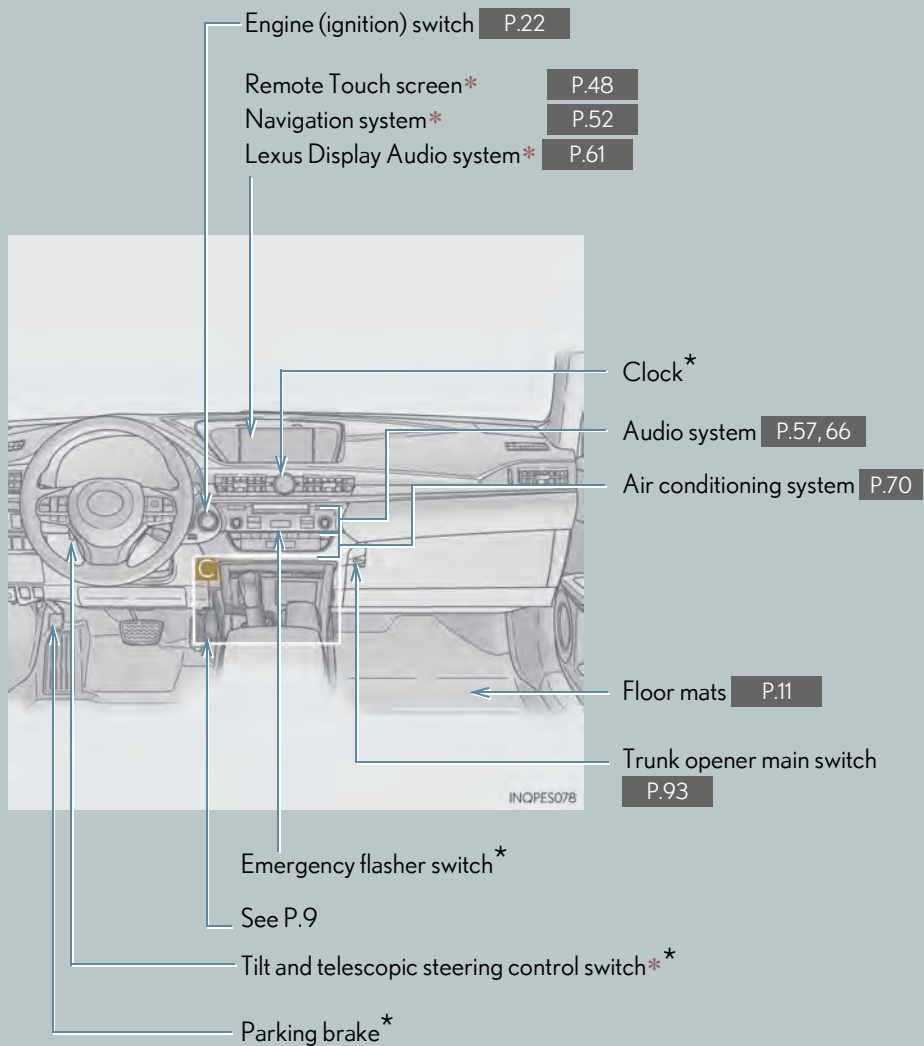
\*: These features may be operated by Voice Command (See P.73)

Outside Rear View Mirrors.....	21
Portable Audio Device Ports.....	78
Power Windows.....	89
Rear Sunshade/Rear Door Sunshades .....	79
Remote Touch (with navigation system).....	48
Seat Heaters and Ventilators.....	78
Smart Access System with Push-button Start .....	15
Theft Deterrent System .....	16
Tire Pressure Warning System .....	47
Trunk.....	93
Trunk Storage Extension .....	80
Turn Signal Lever .....	27
Voice Command System	
Basic operation.....	73
Command list .....	74
Windshield Wipers and Washer .....	34
XM Satellite Radio .....	87

# Overview

## Instrument Panel





\*: If equipped

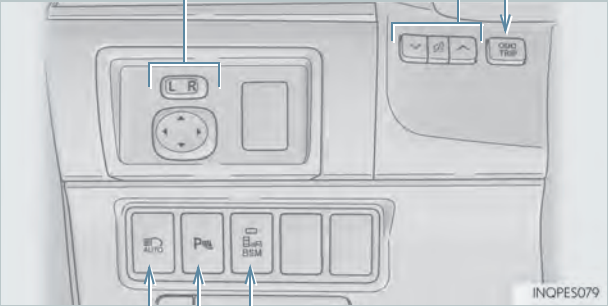
\*: Refer to "OWNER'S MANUAL".

A

Odometer/trip meter and trip meter reset button \*

Instrument panel light control switches \*

Outside rear view mirror switches P.21



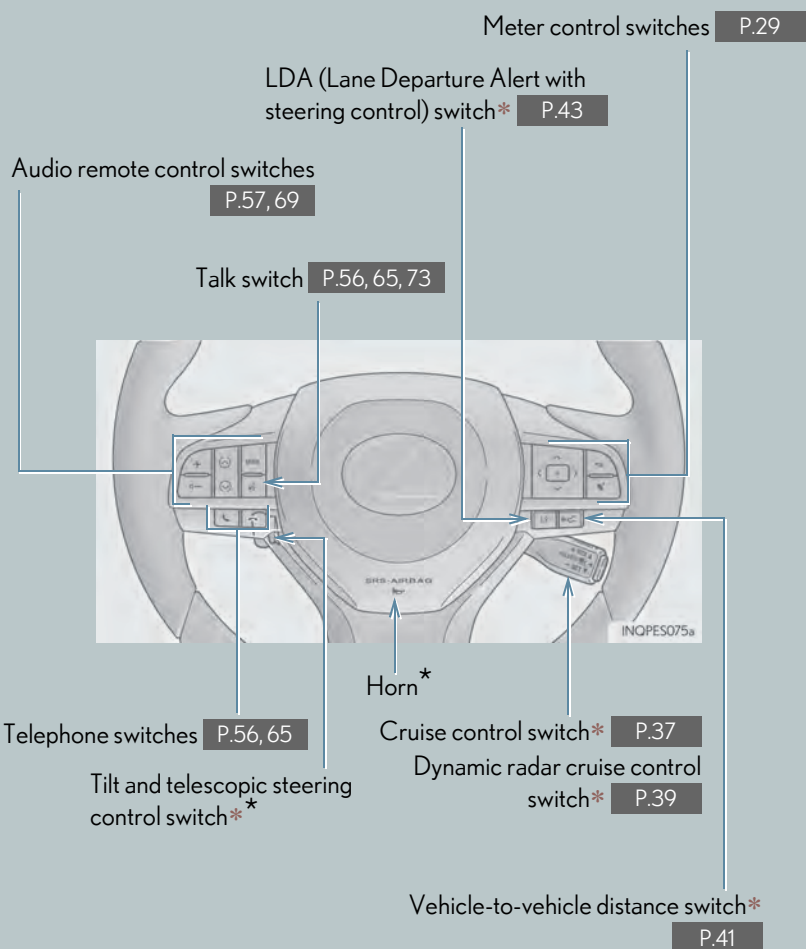
BSM (Blind Spot Monitor) main switch \*  
P.45

Intuitive parking assist switch \*  
P.44

Automatic High Beam switch \* P.32



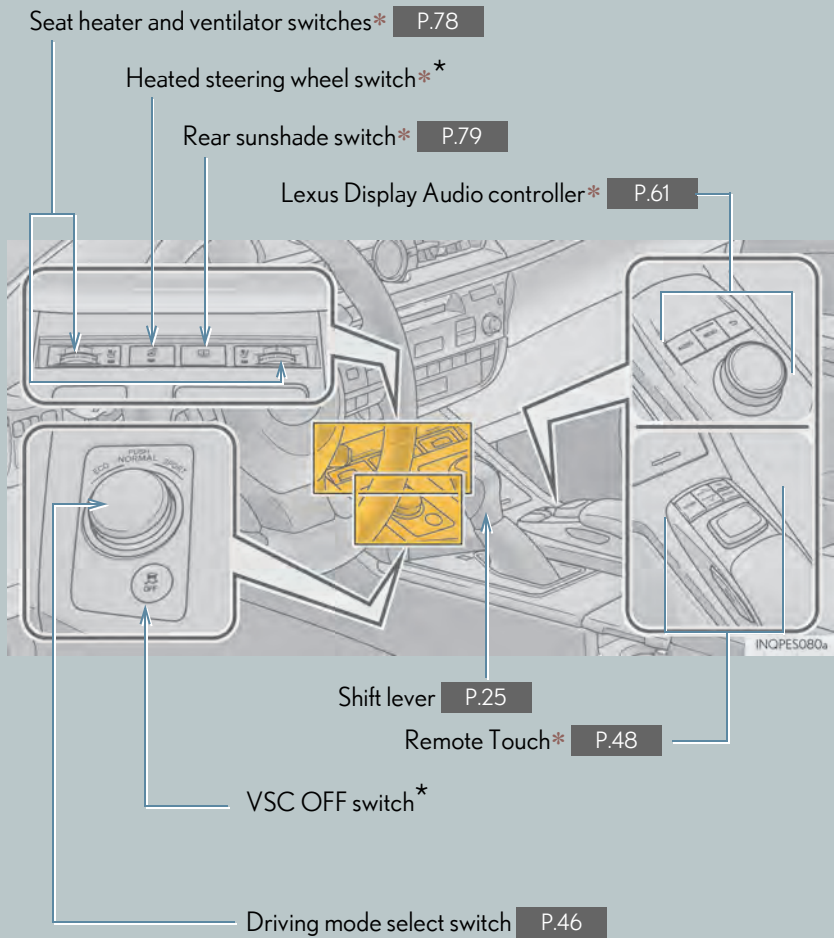
# B

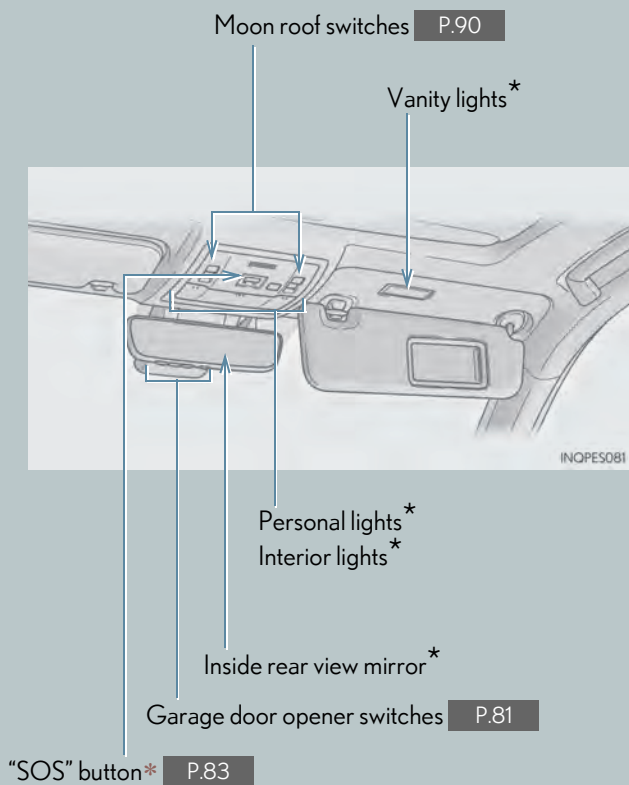


\*: If equipped

\*: Refer to "OWNER'S MANUAL".

C



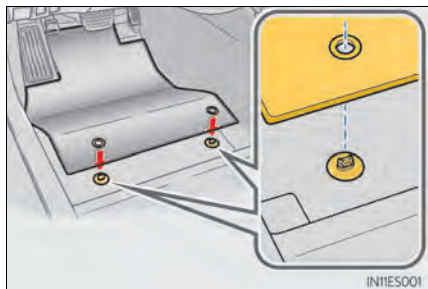


\*: If equipped

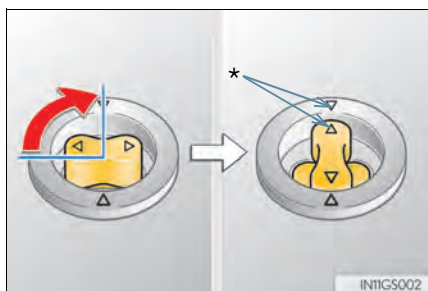
\*: Refer to "OWNER'S MANUAL".

## Floor mat installation

Use only floor mats designed specifically for vehicles of the same model and model year as your vehicle. Fix them securely in place onto the carpet.



- 1** Insert the retaining hooks (clips) into the floor mat eyelets.



- 2** Turn the upper knob of each retaining hook (clip) to secure the floor mats in place.

\*:Always align the  $\triangle$  marks.

The shape of the retaining hooks (clips) may differ from that shown in the illustration.


## Fuel Consumption Screen

Fuel consumption information can be displayed on the navigation system screen or Lexus Display Audio system screen.

### ■ Displaying the fuel consumption screen

#### ● Trip information

##### ► Navigation system screen

Press the "MENU" button on the Remote Touch, then select  on the "Menu" screen, and then select "Fuel Consumption".

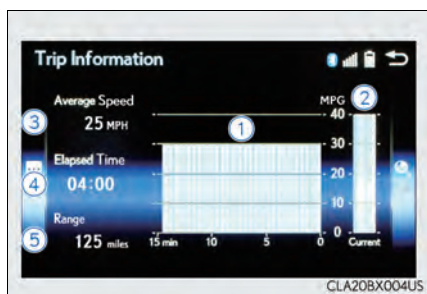
If the "Trip Information" screen does not appear, select "Trip Information".



##### ► Lexus Display Audio screen

Press the "MENU" button on the Lexus Display Audio controller, then select "Info" on the "Menu" screen, and then select "Fuel Consumption".

If the "Trip Information" screen does not appear, move the controller to the right and select "Trip Information".




Average fuel consumption for the past 15 minutes is divided by color into past averages and averages attained since the engine switch was last turned to IGNITION ON mode. Use the displayed average fuel consumption as a reference.

The image is an example only.

● Past record

► Navigation system screen

Press the "MENU" button on the Remote Touch, then select  on the "Menu" screen, and then select "Fuel Consumption".

If the "Past Record" screen does not appear, select "Past Record".

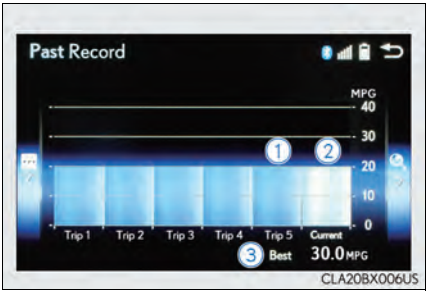


- ① Resetting the past record data
- ② Best recorded fuel consumption
- ③ Average fuel consumption
- ④ Previous fuel consumption record
- ⑤ Updating the average fuel consumption data

► Lexus Display Audio screen

Press the "MENU" button on the Lexus Display Audio controller, then select "Info" on the "Menu" screen, and then select "Fuel Consumption".

If the "Past Record" screen does not appear, move the controller to the right and select "Past Record".



- ① Previous fuel consumption record
- ② Current fuel consumption
- ③ Best recorded fuel consumption

The average fuel consumption history is divided by color into past averages and the average fuel consumption since the last updated. Use the displayed average fuel consumption as a reference.

The image is an example only.

# Keys

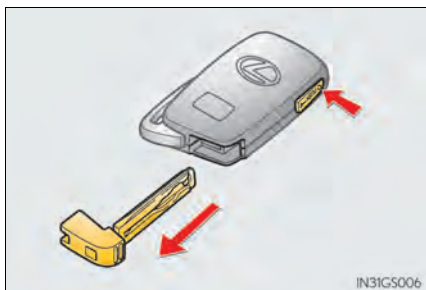
## ■ Electronic key



Smart access system with push-button start  
(→P.15, 22)

Wireless remote control (→P.14)

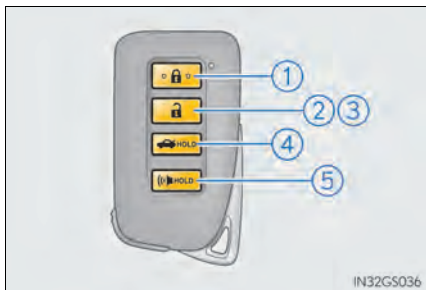
## ■ Mechanical key



To take out the mechanical key, push the release button and take the key out.

After using the mechanical key, store it in the electronic key. Carry the mechanical key together with the electronic key. If the electronic key battery is depleted or the entry function does not operate properly, you will need the mechanical key.

## ■ Wireless remote control



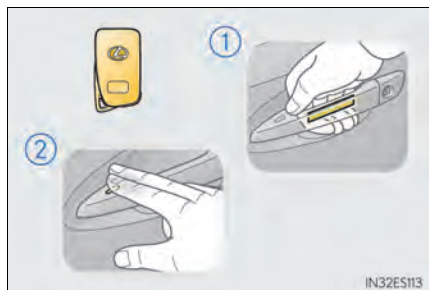
- ① Locks the doors
- ② Unlocks the doors
- ③ Opens the windows and moon roof\*
- ④ Opens the trunk
- ⑤ Sounds the alarm

\*: This setting must be customized at your Lexus dealer.

## Smart Access System with Push-button Start

The following operations can be performed simply by carrying the electronic key on your person, for example in your pocket. The driver should always carry the electronic key. For details on starting the engine, see page 22.

### ■ Entering and exiting the vehicle



- ① Grip the driver's door handle to unlock the door. Grip the passenger's door handle to unlock all the doors.\*

Make sure to touch the sensor on the back of the handle.

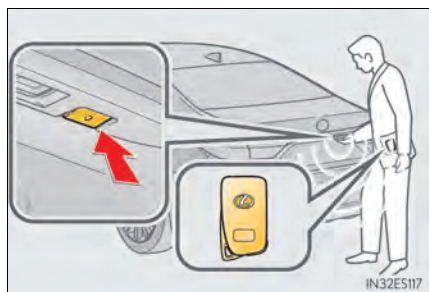
The doors cannot be unlocked for 3 seconds after the doors are locked.

\*: The door unlock settings can be changed.

- ② Touch the lock sensor (the indentation on the upper part of the door handle) to lock all the doors.

Check that the door is securely locked.

### ■ Opening the trunk



Press the button.

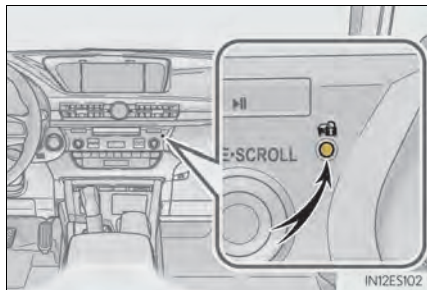
If the vehicle is equipped with power trunk opener and closer, the trunk lid automatically opens fully.

For details on what to do when the electronic key does not operate properly, see page 97.



# Theft Deterrent System

## ■ Engine immobilizer system



The indicator light flashes after the engine switch has been turned off to indicate that the system is operating.

The indicator light stops flashing after the engine switch has been turned to ACCESSORY or IGNITION ON mode to indicate that the system has been canceled.

## ■ Alarm

The alarm uses light and sound to give an alert when an intrusion is detected.

### To set the alarm:

Close the doors, trunk and hood, and lock all the doors. The system will be set automatically after 30 seconds.

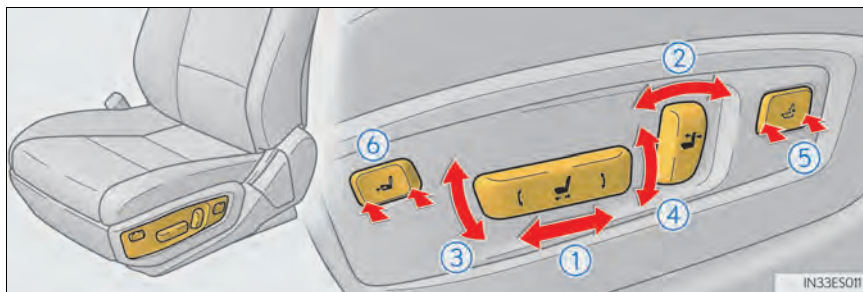
The indicator light changes from being on to flashing when the system is set.

### To deactivate or stop the alarm:

- Unlock the doors or open the trunk using the entry function or wireless remote control.
- Turn the engine switch to ACCESSORY or IGNITION ON mode, or start the engine.  
(The alarm will be deactivated or stopped after a few seconds.)

## Front Seats

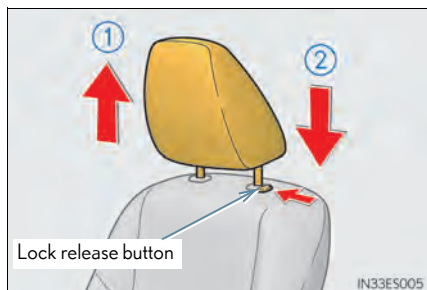
### ■ Adjustment procedure



- ① Seat position adjustment switch
- ② Seatback angle adjustment switch
- ③ Seat cushion (front) angle adjustment switch
- ④ Vertical height adjustment switch
- ⑤ Lumbar support adjustment switch
- ⑥ Seat cushion length adjustment switch (if equipped for driver's side)

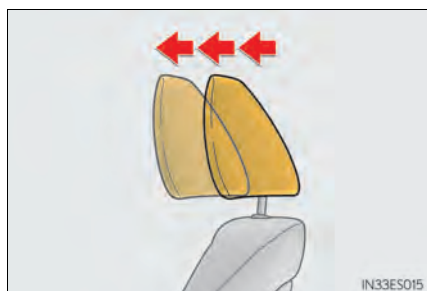
# Head Restraints

## Front seats



### Vertical adjustment

- ① Up  
Pull the head restraints up.
- ② Down  
Push the head restraint down while pressing the lock release button.



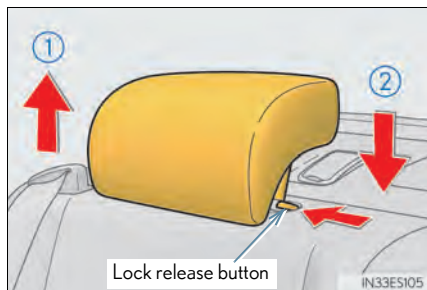
### Horizontal adjustment

The position of the head restraint can be adjusted forward in 4 stages.

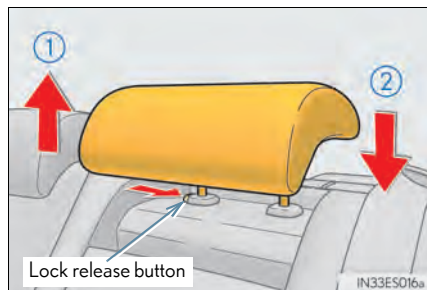
If the head restraint is pulled forward from the foremost position, it will return to the rearmost position.

## Rear seats

### ► Outboard



### ► Center



- ① Up  
Pull the head restraints up.
- ② Down  
Push the head restraint down while pressing the lock release button.

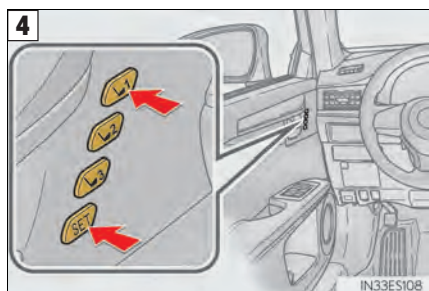
## Driving Position Memory (if equipped)

This feature automatically adjusts the front seats, steering wheel (power adjustment type) and outside rear view mirrors to suit your preferences.

### ■ Driving position memory

#### ■ Recording procedure

- 1 Check that the shift lever is in P.
- 2 Turn the engine switch to IGNITION ON mode.
- 3 Adjust the driver's seat, steering wheel, and outside rear view mirrors to the desired positions.

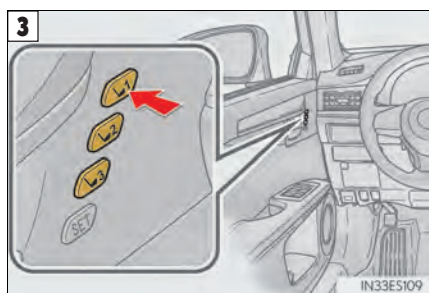


While pressing the "SET" button, or within 3 seconds after the "SET" button is pressed, press button "1", "2" or "3" until the buzzer sounds.

If the selected button has already been preset, the previously recorded position will be overwritten.

#### ■ Recall procedure

- 1 Check that the shift lever is in P.
- 2 Turn the engine switch to IGNITION ON mode.



Press one of the buttons for the driving position you want to recall until the buzzer sounds.

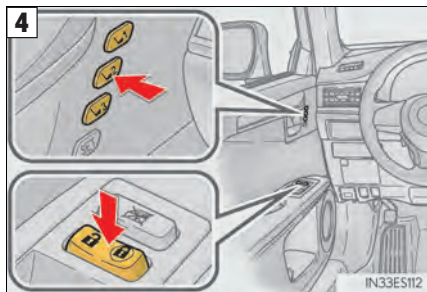
## ■ Memory recall function (driver's side only)

---

Each electronic key can be registered to recall your preferred driving position.

### ■ Registering procedure

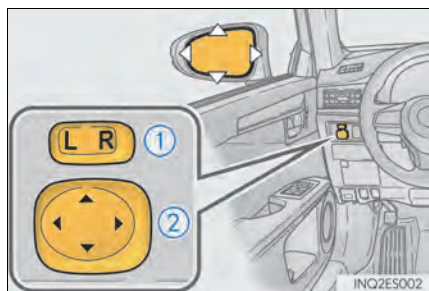
- 1** Check that the shift lever is in P.
- 2** Turn the engine switch to IGNITION ON mode.
- 3** Recall the driving position that you want to record.



While pressing the recalled button, press and hold the door lock switch (either lock or unlock) until the buzzer sounds.

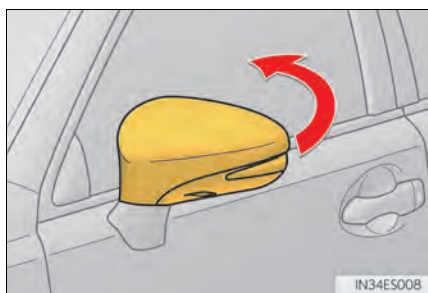
If the button could not be registered, the buzzer sounds continuously for approximately 3 seconds.

## Outside Rear View Mirrors



- ① Selects a mirror to adjust ("L": left or "R": right)
- ② Adjust the mirror up, down, in or out using the switch

### Folding the mirrors



Push the mirror back in the direction of the vehicle's rear.

### Linked mirror function when reversing (if equipped)

When the mirror select switch is in the L or R position, the outside rear view mirrors will automatically angle downwards when the vehicle is reversing in order to give a better view of the ground.

To disable this function, move the mirror select switch to the neutral position (between L and R).

### Adjusting the mirror angle when the vehicle is reversing

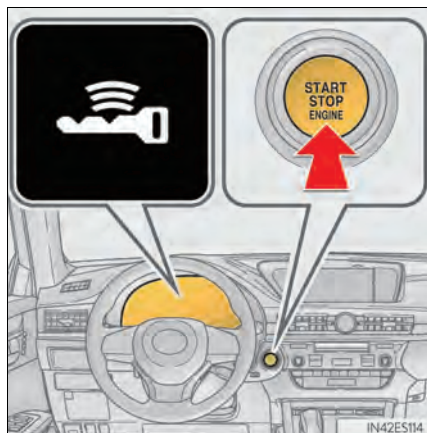
With the shift lever in R, adjust the mirror angle at a desired position. The adjusted angle will be memorized and the mirror will automatically tilt to the memorized angle whenever the shift lever is shifted to R from next time.

The memorized downward tilt position of the mirror is linked to the normal position (angle adjusted with the shift lever in other than R). Therefore, if the normal position is changed after adjustment, the tilt position will also change. When the normal position is changed, readjust the angle in reversing.

## Engine (Ignition) Switch

Performing the following operations when carrying the electronic key on your person starts the engine or changes engine switch modes.

### Starting the engine



- 1 Check that the parking brake is set.
- 2 Check that the shift lever is set in P.
- 3 Firmly depress the brake pedal.



will be displayed on the multi-information display. If it is not displayed, the engine cannot be started.

- 4 Press the engine switch shortly and firmly.

When operating the engine switch, one short, firm press is enough. It is not necessary to press and hold the switch.

The engine will crank until it starts or for up to 30 seconds, whichever is less.

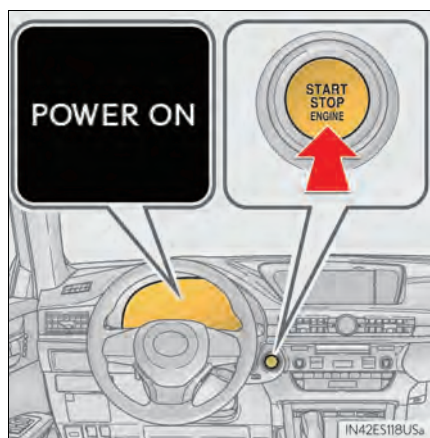
Continue depressing the brake pedal until the engine is completely started. The engine can be started from any engine switch mode.

## ■ Stopping the engine

- 1 Stop the vehicle.
- 2 Set the parking brake, and shift the shift lever to P.
- 3 Press the engine switch.
- 4 Release the brake pedal and check that "POWER ON" on the multi-information display is off.

## ■ Changing engine switch modes

Modes can be changed by pressing the engine switch with the brake pedal released. (The mode changes each time the switch is pressed.)



Off\*

The emergency flashers can be used.

ACCESSORY mode

Some electrical components such as the audio system can be used.

"POWER ON" will be displayed on the multi-information display.

IGNITION ON mode

All electrical components can be used.

"POWER ON" will be displayed on the multi-information display.

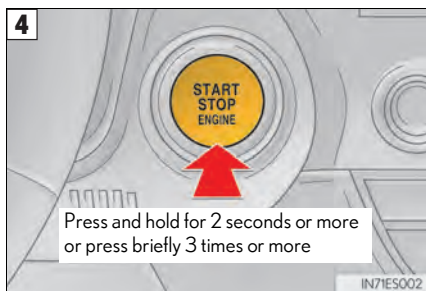
\*: If the shift lever is in a position other than P when turning off the engine, the engine switch will be turned to ACCESSORY mode, not to off.



## ■ If your vehicle has to be stopped in an emergency

Only in an emergency, such as if it becomes impossible to stop the vehicle in the normal way, stop the vehicle using the following procedure:

- 1** Steadily step on the brake pedal with both feet and firmly depress it.  
Do not pump the brake pedal repeatedly as this will increase the effort required to slow the vehicle.
- 2** Shift the shift lever to N.  
► If the shift lever is shifted to N
- 3** After slowing down, stop the vehicle in a safe place by the road.
- 4** Stop the engine.  
► If the shift lever cannot be shifted to N
- 3** Keep depressing the brake pedal with both feet to reduce vehicle speed as much as possible.

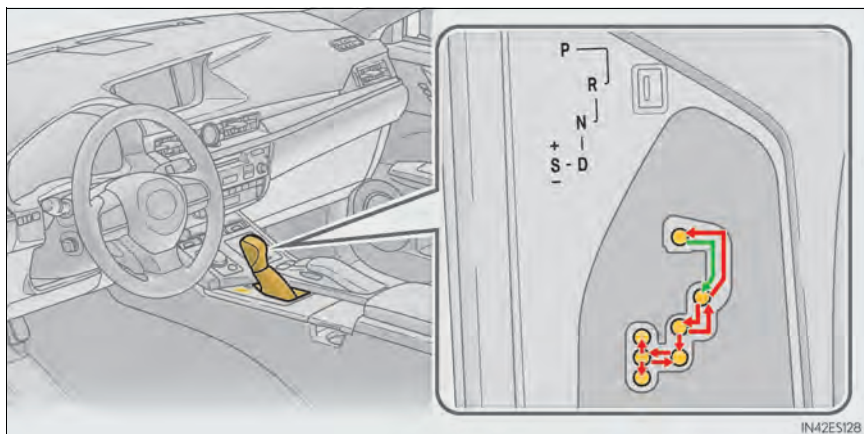


To stop the engine, press and hold the engine switch for 2 consecutive seconds or more, or press it briefly 3 times or more in succession.

- 5** Stop the vehicle in a safe place by the road.

# Automatic Transmission

## Shifting the shift lever



IN42E5128

- While the engine switch is in IGNITION ON mode, move the shift lever with the brake pedal depressed.
- When shifting the shift lever between P and D, make sure that the vehicle is completely stopped.

## Shift position purpose

Shift position	Objective or function
P	Parking the vehicle/starting the engine
R	Reversing
N	Neutral
D	Normal driving <sup>*1</sup>
S	S mode driving <sup>*2</sup>

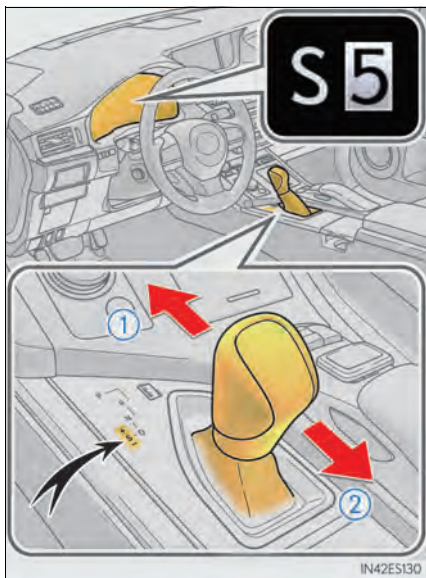
<sup>\*1</sup>: Shifting to the D position allows the system to select a gear suitable for the driving conditions.

Setting the shift lever to the D position is recommended for normal driving.

<sup>\*2</sup>: Selecting shift ranges using S mode restricts the upper limit of the possible gear ranges, controls engine braking force, and prevents unnecessary upshifting.

## ■ Selecting gears in the S position

When the shift lever is in the S position, the shift lever can be operated as follows:



① Upshifting

② Downshifting

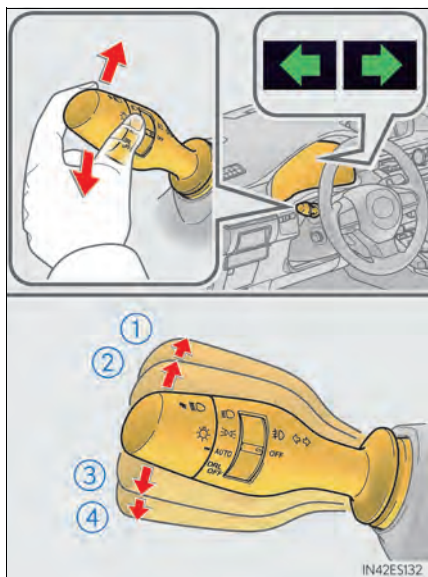
The selected shift range, from 1 to 6, will be displayed in the meter.

The initial shift range in S mode is set automatically to 5 or 4 according to vehicle speed. But, the initial shift range may be set to 3 if AI-SHIFT has operated while the shift lever was in the D position.

### ■ Shift ranges and their functions

- Automatically selecting gears between 1 and 6 according to vehicle speed and driving conditions. But, the gear is limited according to selected shift range.
- You can choose from 6 levels of engine braking force.
- A lower shift range will provide greater engine braking force than a higher shift range, and the engine speed will also increase.

## Turn Signal Lever



- ① Right turn
- ② Lane change to the right (move the lever partway and then release it)  
The right hand signals will flash 3 times.
- ③ Lane change to the left (move the lever partway and then release it)  
The left hand signals will flash 3 times.
- ④ Left turn

### ■ Customization

The number of times the turn signals flash during a lane change can be changed.

## Multi-information Display

The multi-information display presents the driver with a variety of vehicle data.



### Drive information

Select to display various drive data.



### Navigation system-linked display (if equipped)

Select to display the following navigation system-linked information.

- Route guidance
- Compass display (north-up display/heading-up display)



### Audio system-linked display

Select to enable selection of an audio source or track on the display using the meter control switches.



### Driving assist information

Select to display the cruise control or dynamic radar cruise control/LDA (Lane Departure Alert with steering control) (if equipped) information, when the system is used. (→P.37, 39, 43)



### Warning message display

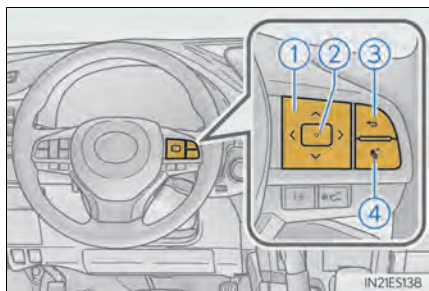
Select to display warning messages and measures to be taken if a malfunction is detected.



### Settings display

Select to change the meter display settings.

## ■ Operating the meter control switches




The multi-information display is operated using the meter control switches.

- ① Select an item/change pages
- ② Enter/Set
- ③ Return to the previous screen
- ④ Press:

Displays the screen registered to 

When no screen has been registered, the drive information screen will be displayed.

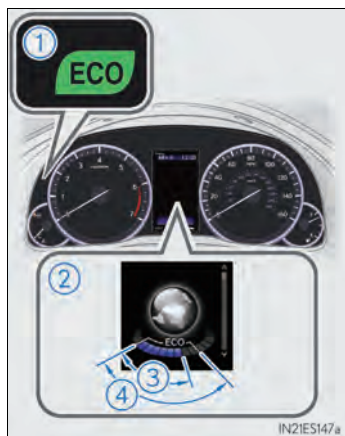
Press and hold:

Registers the currently displayed screen to 

The registration confirmation screen is displayed. If the selected screen cannot be registered, a registration failure message will be shown.

If a problem is detected in any of the vehicle's systems, a warning message is shown on the multi-information display.

## Eco Driving Indicator



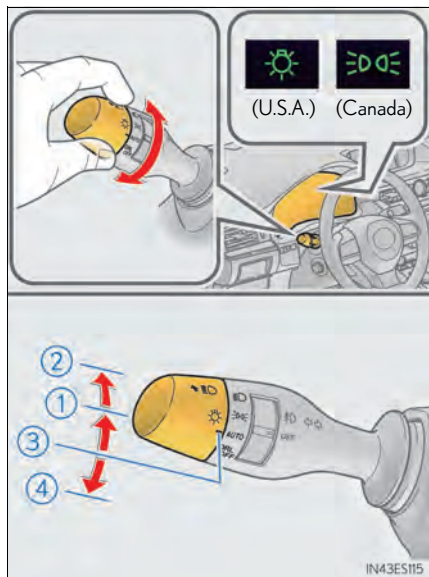
- ① Eco Driving Indicator Light  
During Eco-friendly acceleration (Eco driving), the Eco Driving Indicator Light will turn on. When the acceleration exceeds the Zone of Eco driving, or when the vehicle is stopped, the light turns off.
- ② Eco Driving Indicator Zone Display  
Suggests the Zone of Eco driving with current Eco driving ratio based on acceleration.
- ③ Eco driving ratio based on acceleration  
If the acceleration exceeds the Zone of Eco driving, the right side of the Eco Driving Indicator Zone Display will illuminate.  
When this happens, the Eco Driving Indicator Light will turn off.
- ④ Zone of Eco driving

Eco Driving Indicator will not operate under the following conditions:

- The engine is not running.
- The shift lever is in any position other than D.
- Neither normal mode nor Eco drive mode is selected. (→P.46)
- The vehicle speed is approximately 80 mph (130 km/h) or higher.

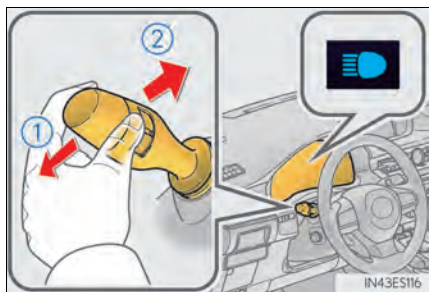
Settings of the display and non-display of the Eco Driving Indicator Light can be changed.

## Headlights



- ① The side marker, parking, tail, license plate, instrument panel lights and daytime running lights turn on.
- ② The headlights, parking and all lights listed above (except daytime running lights) turn on.
- ③ **AUTO** The headlights, daytime running lights and all the lights listed above turn on and off automatically. (When the engine switch is in IGNITION ON mode.)
- ④ **DRL OFF**  
(U.S.A.)  
○ The daytime running lights turn (Canada) on.

### ■ Turning on the high beam headlights



- ① With the headlights on, push the lever away from you to turn on the high beams. Pull the lever toward you to the center position to turn the high beams off.
- ② Pull the lever toward you and release it to flash the high beams once. You can flash the high beams with the headlights on or off.

### ■ AFS (Adaptive Front-lighting System) (if equipped)

AFS (Adaptive Front-lighting System) improves visibility at intersections and on curves by automatically adjusting the lateral angle of the headlights according to vehicle speed and the degree of the tire angle that are controlled by steering input. Operates at speed of 6 mph (10 km/h) or higher.

### ■ Deactivating AFS

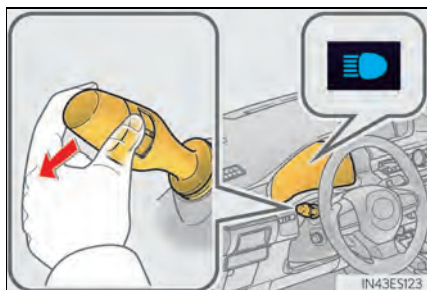
- ① Select "AFS" on (settings display) of the multi-information display.
- ② Press the meter control switch.




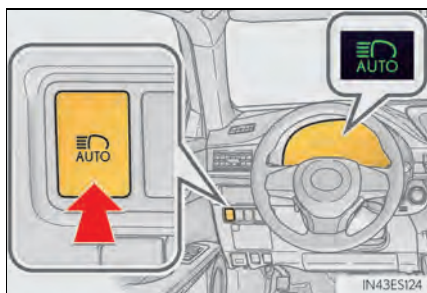
## Automatic High Beam (if equipped)

The Automatic High Beam uses an in-vehicle camera sensor to assess the brightness of streetlights, the lights of vehicles ahead, etc., and automatically turns the high beam on or off as necessary.

### ■ Activating the Automatic High Beam system



- 1** Push the lever away from you with the headlight switch in the **AUTO** or  position.

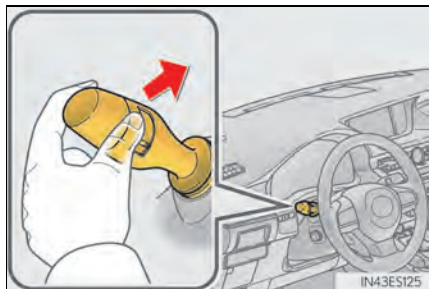


- 2** Press the Automatic High Beam switch.

The Automatic High Beam indicator will come on when the headlights are turned on automatically to indicate that the system is active.

## ■ Turning the high beam on/off manually

### ● Switching to low beam

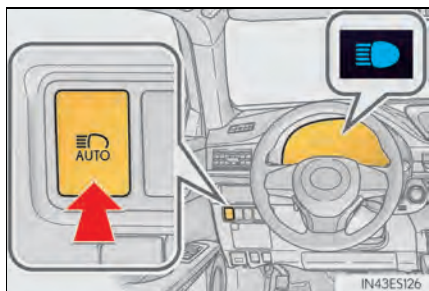


Pull the lever to the original position.

The Automatic High Beam indicator will turn off.

Push the lever away from you to activate the Automatic High Beam system again.

### ● Switching to high beam



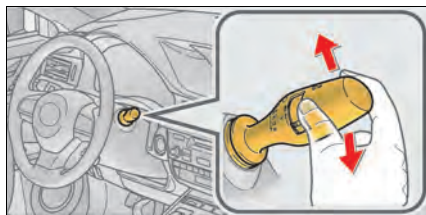
Press the Automatic High Beam switch.

The Automatic High Beam indicator will turn off and the high beam indicator will turn on.

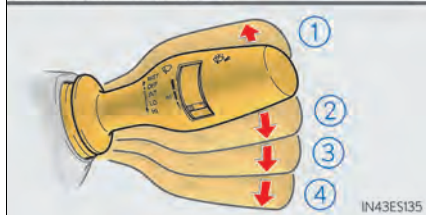
Press the switch to activate the Automatic High Beam system again.

# Windshield Wipers and Washer

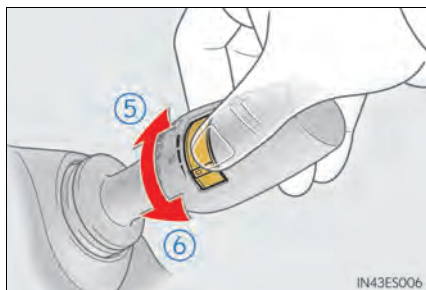
## ■ Intermittent windshield wipers with interval adjuster



- ① Temporary operation
- ② Intermittent operation
- ③ Low speed operation
- ④ High speed operation



IN43ES135



IN43ES006

Wiper intervals can be adjusted when intermittent operation is selected.

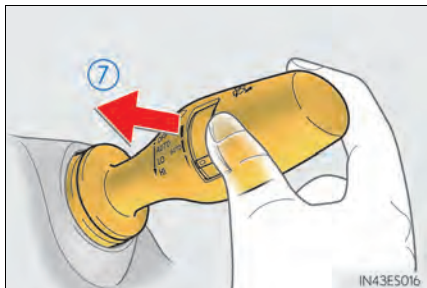
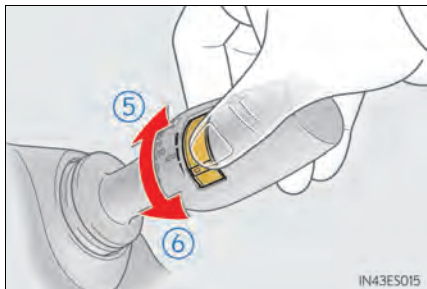
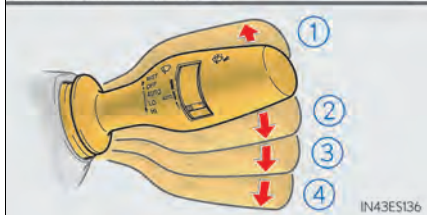
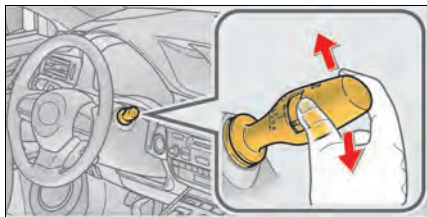
- ⑤ Increases the intermittent windshield wiper frequency
- ⑥ Decreases the intermittent windshield wiper frequency



IN43ES007

- ⑦ Washer/wiper dual operation  
Wipers will automatically operate a couple of times after the washer squirts.

## ■ Rain-sensing windshield wipers



- ① Temporary operation
- ② Rain-sensing wiper operation (AUTO)
- ③ Low speed operation
- ④ High speed operation

With AUTO selected, the wipers will operate automatically when the sensor detects falling rain. The system automatically adjusts wiper timing in accordance with rain volume and vehicle speed.

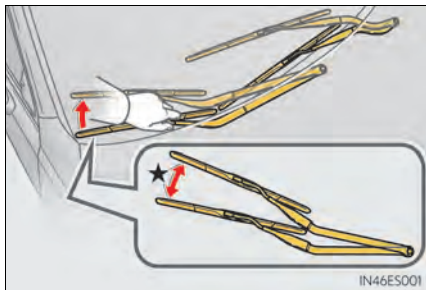
The sensor sensitivity can be adjusted when AUTO is selected.

- ⑤ Increases the sensitivity
- ⑥ Decreases the sensitivity

- ⑦ Washer/wiper dual operation  
Wipers will automatically operate a couple of times after the washer squirts.

## ■ Shifting the windshield wiper position

### ■ To rest position

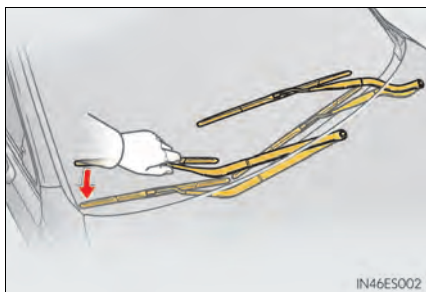


Raise the wiper in line with the windshield until it locks.

You can stand the wipers up for the rest position.

★: More than 3.9 in. (10 cm)

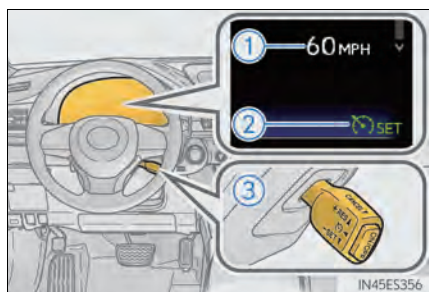
### ■ To retract position



Lower the wipers by pressing on the upper part of the hook section.

## Cruise Control (if equipped)

Use the cruise control to maintain a set speed without depressing the accelerator pedal.

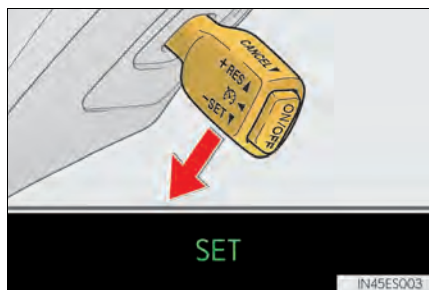


- ① Set speed
- ② Indicators
- ③ Cruise control switch

### ■ Setting the vehicle speed

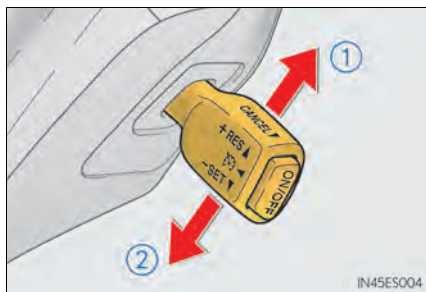


- 1** Press the "ON/OFF" button to activate the cruise control.  
Cruise control indicator will come on.  
Press the button again to deactivate the cruise control.



- 2** Accelerate or decelerate the vehicle to the desired speed, and push the lever down to set the speed.  
Cruise control "SET" indicator will come on.  
The vehicle speed at the moment the lever is released becomes the set speed.

## ■ Adjusting the set speed



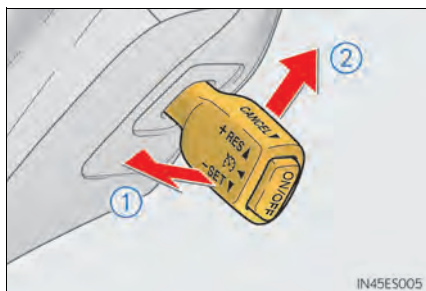
① Increases the speed

② Decreases the speed

Fine adjustment: Momentarily move the lever in the desired direction.

Large adjustment: Hold the lever in the desired direction.

## ■ Canceling and resuming the constant speed control



① Pulling the lever toward you cancels the constant speed control.

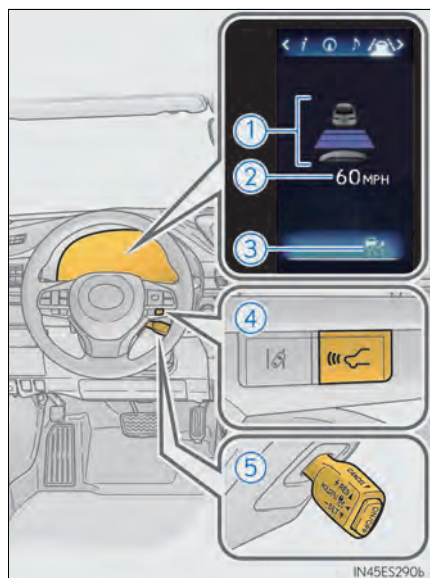
The speed setting is also canceled when the brakes are applied.

② Pushing the lever up resumes the constant speed control.

Resuming is available when the vehicle speed is more than approximately 25 mph (40 km/h).

## Dynamic Radar Cruise Control (if equipped)

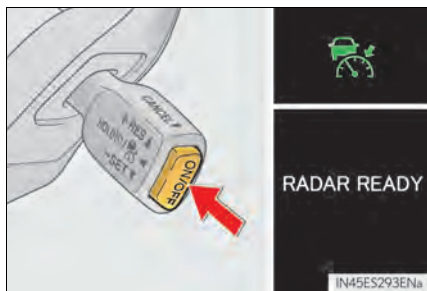
In vehicle-to-vehicle distance control mode, the vehicle automatically accelerates and decelerates to match the speed changes of the preceding vehicle even if the accelerator pedal is not depressed. In constant speed control mode, the vehicle runs at a fixed speed. Use the dynamic radar cruise control on freeways and highways.



- ① Display
- ② Set speed
- ③ Indicators
- ④ Vehicle-to-vehicle distance switch
- ⑤ Cruise control switch



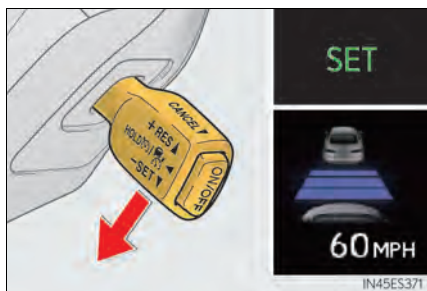
## ■ Setting the vehicle speed (vehicle-to-vehicle distance control mode)



- 1 Press the "ON/OFF" button to activate the cruise control.

Radar cruise control indicator will come on and a message will be displayed on the multi-information display.

Press the button again to deactivate the cruise control.

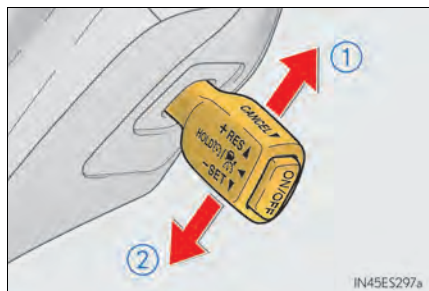


- 2 Accelerate or decelerate, with accelerator pedal operation, to the desired vehicle speed (above approximately 30 mph [50 km/h]) and push the lever down to set the speed.

Cruise control "SET" indicator will come on.

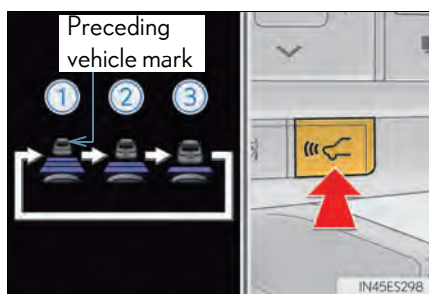
The vehicle speed at the moment the lever is released becomes the set speed.

## ■ Adjusting the set speed



- ① Increases the speed
  - ② Decreases the speed
- Fine adjustment: Momentarily move the lever in the desired direction.
- Large adjustment: Hold the lever up or down to change the speed, and release when the desired speed is reached.

## ■ Changing the vehicle-to-vehicle distance (vehicle-to-vehicle distance control mode)



Pressing the switch changes the vehicle-to-vehicle distance as follows:

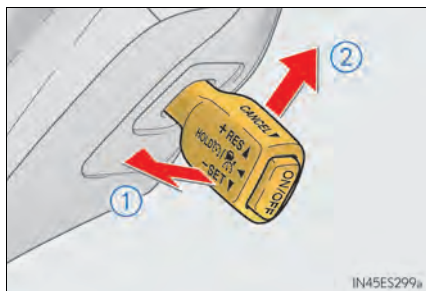
- ① Long
- ② Medium
- ③ Short

The vehicle-to-vehicle distance is set automatically to long mode when the engine switch is turned to IGNITION ON mode.

If a vehicle is running ahead of you, the preceding vehicle mark will also be displayed.

The vehicle-to-vehicle distance control mode maintains the preset cruising speed as long as no vehicle is detected ahead.

## ■ Canceling and resuming the speed control



- 1 Pulling the lever toward you cancels the speed control.

The speed control is also canceled when the brake pedal is depressed.

- 2 Pushing the lever up resumes the cruise control and returns vehicle speed to the set speed.

However, cruise control does not resume when the vehicle speed is approximately 25 mph (40 km/h) or less.

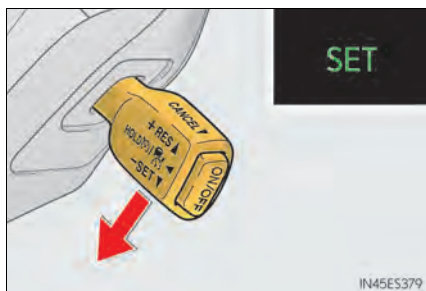
## ■ Selecting constant speed control mode



- 1 With the cruise control off, press and hold the "ON/OFF" button for 1.5 seconds or more.

Immediately after the "ON/OFF" button is pressed, the radar cruise control indicator will come on. Afterwards, it switches to the cruise control indicator.

Switching to constant speed control mode is only possible when operating the lever with the cruise control off.



- 2 Accelerate or decelerate, with accelerator pedal operation, to the desired vehicle speed (at or above approximately 25 mph [40 km/h]) and push the lever down to set the speed.

Cruise control "SET" indicator will come on.

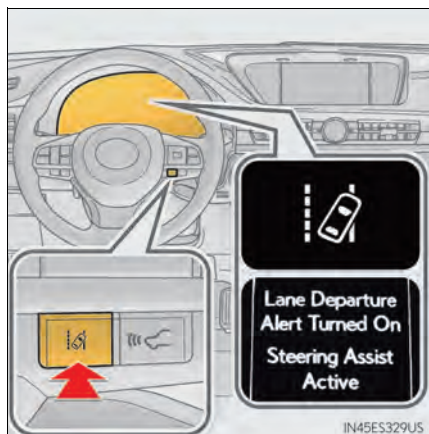
The vehicle speed at the moment the lever is released becomes the set speed.

## LDA (Lane Departure Alert with steering control) (if equipped)

When driving on highways and freeways with white (yellow) lines, this function alerts the driver when the vehicle might depart from its lane and provides assistance by operating the steering wheel to keep the vehicle in its lane.

The LDA system recognizes visible white (yellow) lines with the camera sensor on the upper portion of the front windshield.

### ■ Turning LDA system on



Press the LDA switch to turn the LDA system on.

The LDA indicator illuminates and a message is displayed on the multi-information display.

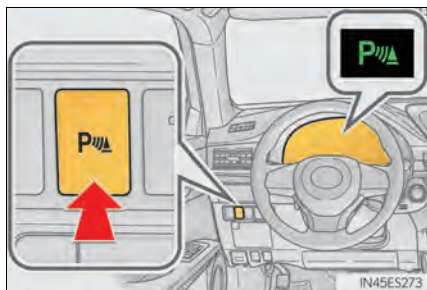
Press the LDA switch again to turn the LDA system off.

When the LDA system is turned on or off, operation of the LDA system continues in the same condition the next time the engine is started.

## Intuitive Parking Assist (if equipped)

The distance from your vehicle to nearby obstacles when parallel parking or maneuvering into a garage is measured by the sensors and communicated via the multi-information display, navigation system screen or Lexus Display Audio system screen and a buzzer. Always check the surrounding area when using this system.

### ■ Turning the system on and off



Turns the intuitive parking assist on/off

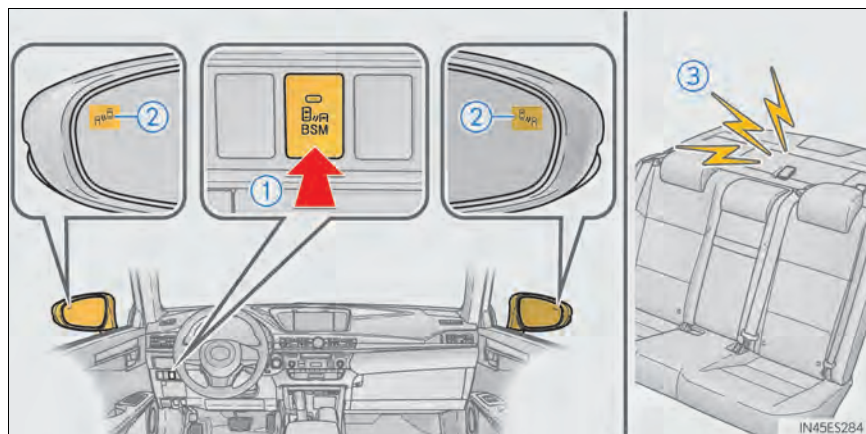
When on, the indicator light comes on to inform the driver that the system is operational.

## BSM (Blind Spot Monitor) (if equipped)

The Blind Spot Monitor is a system that has 2 functions;

- The Blind Spot Monitor function  
Assists the driver in making the decision when changing lanes
- The Rear Cross Traffic Alert function  
Assists the driver when backing up

These functions use same sensors.



### ① BSM main switch

Pressing the switch turns the system on or off. When the switch is set to on, the switch's indicator illuminates. Common switch for Blind Spot Monitor function and Rear Cross Traffic Alert function.

### ② Outside rear view mirror indicator

Blind Spot Monitor function:

When a vehicle is detected in the blind spot, the outside rear view mirror indicator comes on while the turn signal lever is not operated. If the turn signal lever is operated toward the detected side, the outside rear view mirror indicator flashes.

Rear Cross Traffic Alert function:

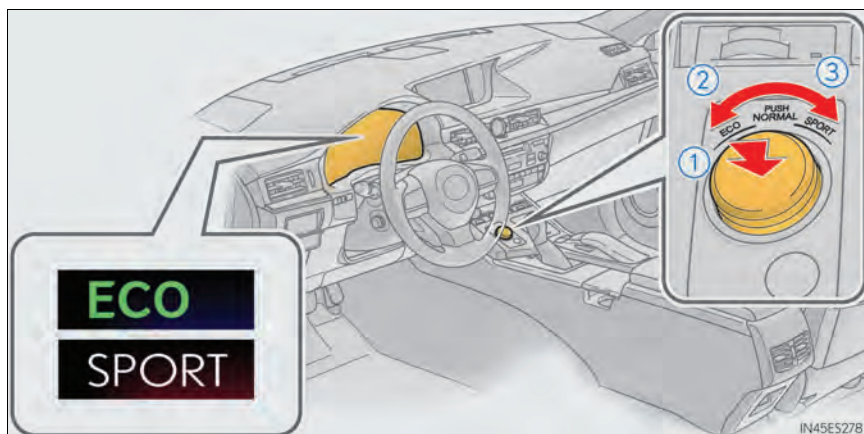
When a vehicle approaching from the right or left rear of the vehicle is detected, the outside rear view mirror indicators flash.

### ③ Rear Cross Traffic Alert function buzzer (Rear Cross Traffic Alert function only)

When a vehicle approaching from the right or left rear of the vehicle is detected, a buzzer sounds from behind the rear seat.

## Driving Mode Select Switch

The driving modes can be selected to suit driving condition.

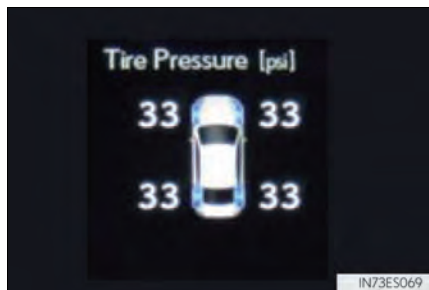


- ① Normal mode  
For normal driving.  
Press the switch to change the driving mode to normal mode when selected to Eco drive mode or sport mode.
- ② Eco drive mode  
Use Eco drive mode to help achieve low fuel consumption during trips that involve frequent accelerating.  
When not in Eco drive mode and the driving mode select switch is turned to the left, the "ECO" indicator comes on in the multi-information display.
- ③ Sport mode  
Assists acceleration response by controlling the steering and transmission. Suitable for when precise handling is desirable, for example when driving on mountain roads.  
When not in Sport mode and the driving mode select switch is turned to the right, the "SPORT" indicator comes on in the multi-information display.

## Tire Pressure Warning System

Your vehicle is equipped with a tire pressure warning system that uses tire pressure warning valves and transmitters to detect low tire inflation pressure before serious problems arise.

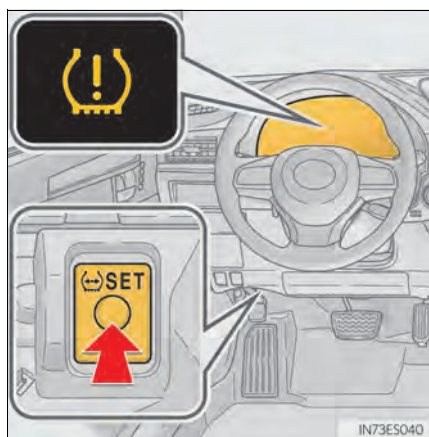
### The tire inflation pressure display function



The tire pressure detected by the tire pressure warning system can be displayed on the multi-information display. (→P.28)

The illustration used is intended as an example, and may differ from the image that is actually displayed on the multi-information display.

### Initializing the tire pressure warning system



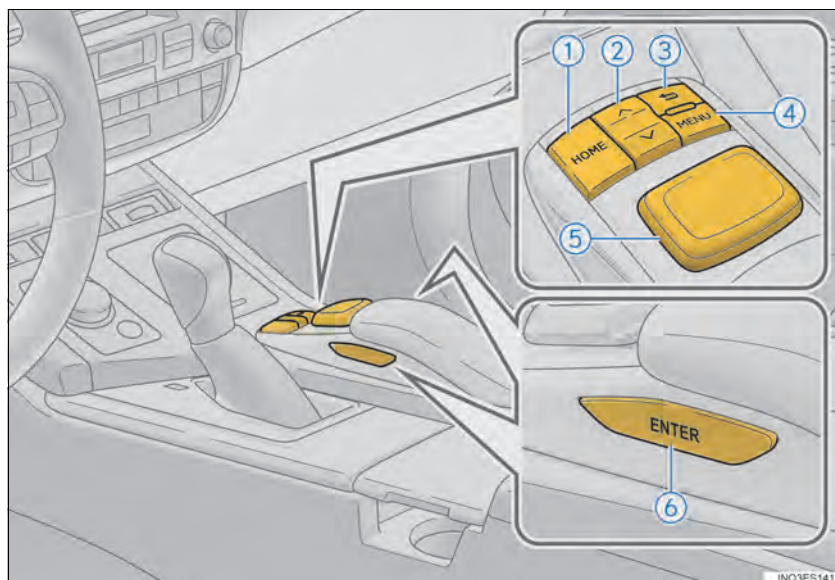
Press and hold the tire pressure warning reset switch until the tire pressure warning light blinks slowly 3 times.



## Remote Touch (with navigation system)

The Remote Touch can be used to operate the Remote Touch screens.

### Basic operation



- ① "HOME" button  
Press to display the home screen.
- ② " $\wedge \cdot \vee$ " button  
Press to scroll the list screen and to change the scale of the map.
- ③ Back button  
Press to display the previous screen.
- ④ "MENU" button  
Press to display the "Menu" screen.
- ⑤ Remote Touch knob  
Move in the desired direction to select a function, letter and screen button.  
Press to enter the selected function, letter or screen button.
- ⑥ "ENTER" button  
Press to enter the selected function, letter or screen button.

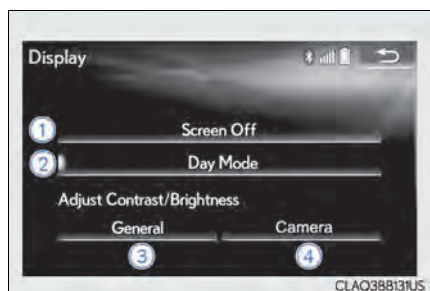
## Menu



Press the "MENU" button on the Remote Touch to display the "Menu" screen.

- ① "Nav" (→P.52)
- ② "Radio" (→P.58)
- ③ "Media" (→P.59)
- ④ "Phone" (→P.54)
- ⑤ "LEXUS App Suite"
- ⑥ "Info"
- ⑦ "Climate" (→P.70)
- ⑧ "Setup"
- ⑨ "Display"

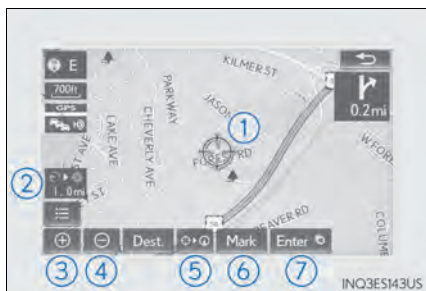
## Display



Press the "MENU" button on the Remote Touch and select "Display" on the "Menu" screen.

- ① Turns the screen off
- ② Displays the screen in "Day Mode" with the headlight switch on
- ③ Adjust the screen display
- ④ Adjust the camera display

## ■ Screen scroll operation



To scroll over the map screen, place the cursor mark in the desired position and then press and hold the Remote Touch knob.

- ① Cursor mark
- ② Distance from the current position to the cursor mark.
- ③ Zooms in on the map
- ④ Zooms out on the map
- ⑤ Select to return to the current position.
- ⑥ Select to register as a memory point.
- ⑦ Select to set as a destination.

## ■ Setting a route

While route guidance is operating, you can change the route using the following method.



**1** Press the “MENU” button on the Remote Touch, then select “Nav.”.

**2** Select .

**3** Select “Edit Route”.

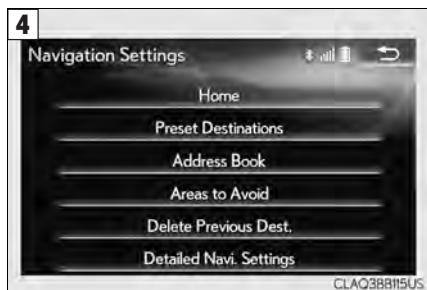
**4** The following settings can be accessed.

- ① Adding destinations
- ② Deleting destinations
- ③ Reordering destinations
- ④ Route preferences
- ⑤ Route type
- ⑥ Detour setting
- ⑦ Starting from adjacent road

Some functions are unavailable while the vehicle is in motion. Refer to the “NAVIGATION SYSTEM OWNER'S MANUAL”.

## Navigation System (if equipped)

### Register home



- 1** Press the "MENU" button on the Remote Touch.  
Please refer to page 48 for the Remote Touch operation.
- 2** Select "Setup".
- 3** Select "Navigation".
- 4** Select "Home".
- 5** Select "Set Home Location".
- 6** Select "Address".
- 7** Select "City".
- 8** Enter a city name and select "OK".
- 9** Select the desired city name.
- 10** Enter a street name and select "OK".
- 11** Select the desired street name.
- 12** Enter a house number and select "OK".
- 13** Select "Enter".
- 14** Select "OK".

## Destination search

### Search by address



**1** Press the "MENU" button on the Remote Touch, then select "Nav". Please refer to page 48 for the Remote Touch operation.

**2** Select "Dest".

**3** Select "Address".

#### ► Search by city



**4** Select "City".

**5** Enter a city name and select "OK".

**6** Select the desired city name.

**7** Enter a street name and select "OK".

**8** Select the desired street name.

**9** Enter a house number and select "OK".

**10** Select "Go".

**11** Select "OK".

#### ► Search by street address



**4** Select "Street Address".

**5** Enter a house number and select "OK".

**6** Enter a street name and select "OK".

**7** Select the desired street name.

**8** Enter a city name and select "OK".

**9** Select the desired city name.

**10** Select "Go".

**11** Select "OK".

## Search by point of interest

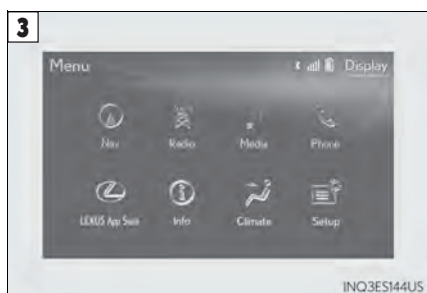


- 1 Press the "MENU" button on the Remote Touch, then select "Nav.". Please refer to page 48 for the Remote Touch operation.
- 2 Select "Dest.".
- 3 Select "Point of Interest".

## Hands-free System For Cellular Phone (with navigation system)

### Bluetooth® phone pairing

To use the hands-free system, it is necessary to register a Bluetooth® phone with the system. Please refer to the cellular phone manufacturer's user guide for pairing procedures, or go to <http://www.lexus.com/MobileLink> for more phone information.



- 1 Turn the Bluetooth® connection setting of your cellular phone on.
- 2 Press the "MENU" button on the Remote Touch. Please refer to page 48 for the Remote Touch operation.
- 3 Select "Phone".



- 4 Select "Yes" to register a phone.



- 5 When this screen is displayed, search for the device name displayed on this screen on the screen of your Bluetooth® device.

- 6 Register the Bluetooth® device using your Bluetooth® device.



- 7 Check that a confirmation screen is displayed indicating pairing was successful.

- 8 Check that "Connected" is displayed and registration is complete.

## Contact transfer



- 1 Press the "MENU" button on the Remote Touch. Please refer to page 48 for the Remote Touch operation.

- 2 Select "Setup".

- 3 Select "Phone".

- 4 Select "Contact/Call History".

- 5 Select "Transfer Contacts from Phone".

- 6 Transfer the contact data to the system using a Bluetooth® phone.

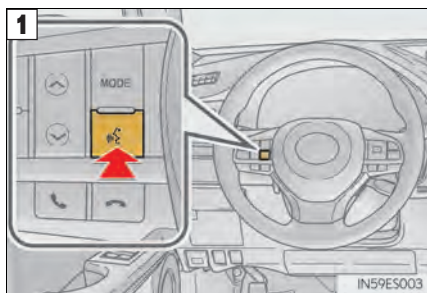
- 7 Check that a confirmation screen is displayed when the operation is complete.

Contact transfer may not be possible depending on phone model.



## ■ Calling by name

You can call by giving a name registered in the contact list. For details, refer to the "NAVIGATION SYSTEM OWNER'S MANUAL".




- 1** Press the talk switch.
- 2** Say "Call <contacts> <phone types>".  
In the same manner as it is displayed on the screen, "Call <contacts> <phone types>", after saying "Call a contact" say the name, or the name and type of phone, of a contact.  
For example: "Call a contact", "John Smith" or "Call a contact", "Mary Davis", "Mobile"

Talk switch: Pressing this switch turns the voice command system on. Say a command after the beep.

## ■ Receiving a call

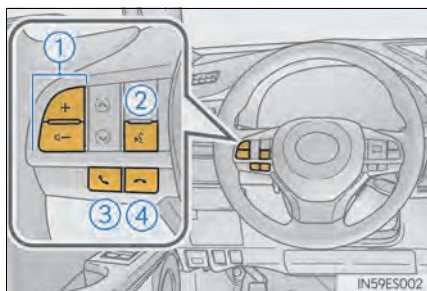
When a call is received, call screen is displayed with a sound.

Call screen can also be displayed on the side display.

Press  on the steering wheel to talk on the phone.

To refuse to receive the call, press  on the steering wheel.

## ■ Steering switches

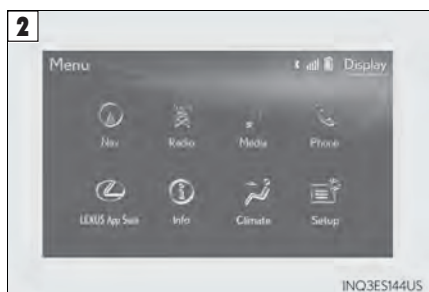


- ① Increases/decreases volume
- ② Start the voice command system
- ③ Sending/Receiving/Phone top screen display
- ④ End call/Refuse call

## Audio System (with navigation system)

### Audio control screen

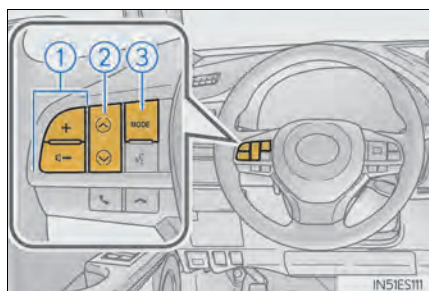
Follow the procedure below to display the audio control screen.



- 1** Press the "MENU" button on the Remote Touch.  
Please refer to page 48 for the Remote Touch operation.  
The "Menu" screen will be displayed.
- 2** Using the Remote Touch, select "Radio" or "Media".

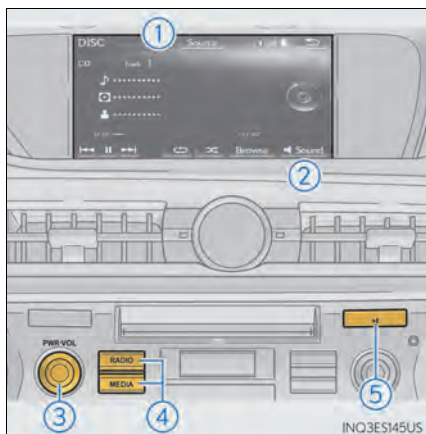
### Remote control (steering wheel audio switches)

Some audio features can be controlled using the switches on the steering wheel.



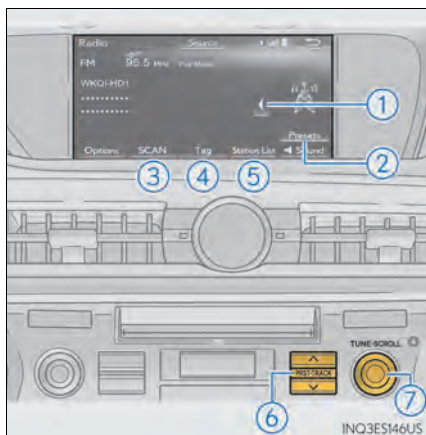
- ① Adjust volume
- ② Radio mode: Select a radio station/channel  
Audio CD mode: Select a track  
MP3/WMA/AAC disc mode: Select a file  
DVD mode: Select a chapter  
iPod mode: Select a track/file
- ③ Select audio source  
Play/Pause  
Turn mute on/off

## Basic operation



- ① Display the audio source selection screen
- ② Display the sound setting screen
- ③ Adjust volume  
Turn the audio system on/off
- ④ Select a radio/media mode
- ⑤ Play/Pause  
Turn mute on/off

## Radio



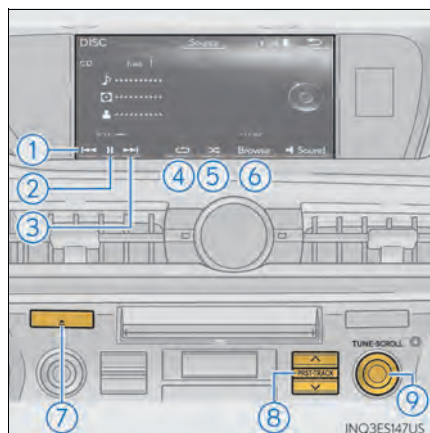
- ① Display the cache radio operation buttons
- ② Display the radio preset buttons
- ③ Scan for receivable stations/channels
- ④ Select to store artist and song title information
- ⑤ Display a list of receivable stations
- ⑥ Select a preset station/channel  
Seek for a station/channel
- ⑦ Step up/down frequencies/channels  
Move up/down the list

## Entering station/channel presets

- 1** Select the desired station/channel by using the tune, the seek or the scan function.
- 2** Select "Presets".
- 3** Select one of the screen buttons and hold it until a beep is heard, indicating that the station/channel has been set.

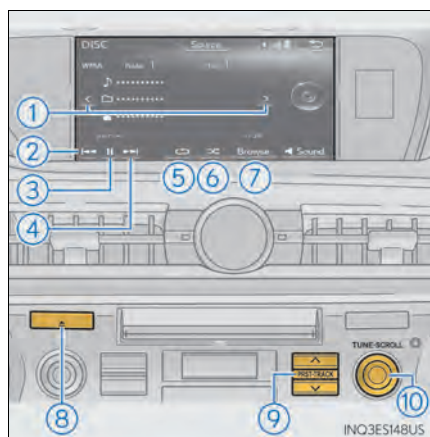
## ■ DVD player/CD player

### ■ Playing an audio CD



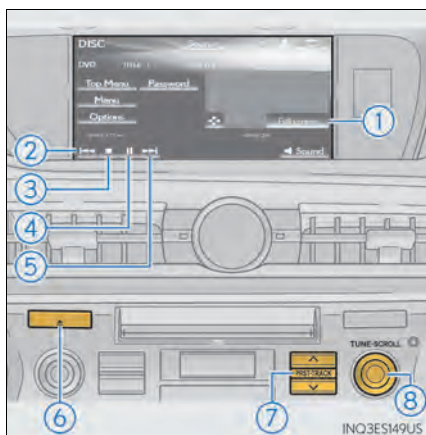
- ① Select a track  
Rewind
- ② Play/Pause
- ③ Select a track  
Fast forward
- ④ Set repeat playback
- ⑤ Set random playback
- ⑥ Display a track list
- ⑦ Eject a disc
- ⑧ Select a track  
Fast forward/rewind
- ⑨ Select a track  
Move up/down the list

### ■ Playing a CD with MP3/WMA/AAC files



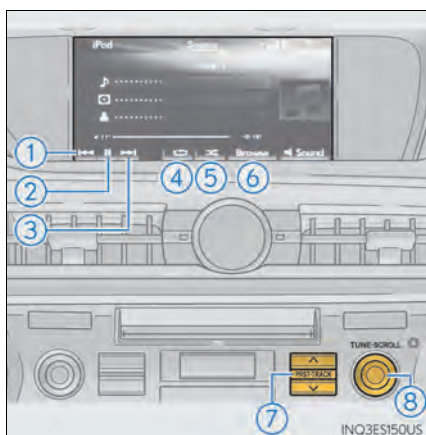
- ① Select a folder
- ② Select a file  
Rewind
- ③ Play/Pause
- ④ Select a file  
Fast forward
- ⑤ Set repeat playback
- ⑥ Set random playback
- ⑦ Display a folder list
- ⑧ Eject a disc
- ⑨ Select a file  
Fast forward/rewind
- ⑩ Select a file  
Move up/down the list

## ■ Playing a DVD



- ① Display full screen video
- ② Select a chapter  
Rewind
- ③ Stop the video screen
- ④ Play/Pause
- ⑤ Select a chapter  
Fast forward/Slow forward
- ⑥ Eject a disc
- ⑦ Select a chapter  
Fast forward/rewind
- ⑧ Select a chapter

## ■ Operating an iPod

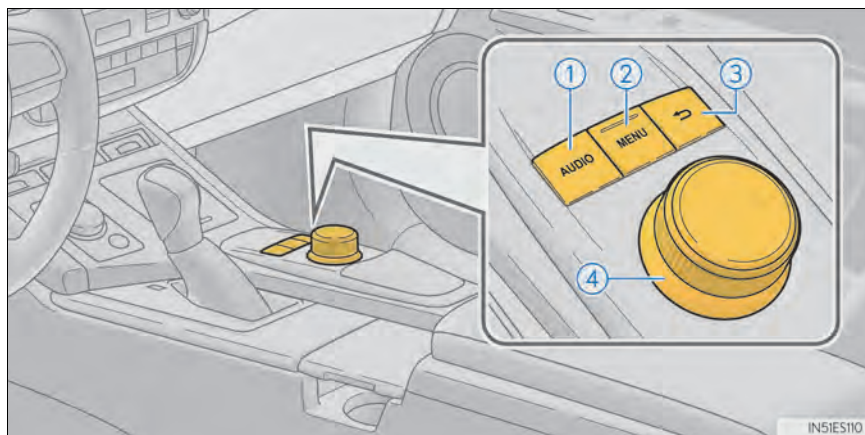


- ① Select a track  
Rewind
- ② Play/Pause
- ③ Select a track  
Fast forward
- ④ Set repeat playback
- ⑤ Set random playback
- ⑥ Display the play mode selection screen
- ⑦ Select a track  
Fast forward/rewind
- ⑧ Select a track  
Move up/down the list

## Lexus Display Audio Controller (with Lexus Display Audio System)

By using the Lexus Display Audio controller, you can control the audio system, hands-free system, etc.

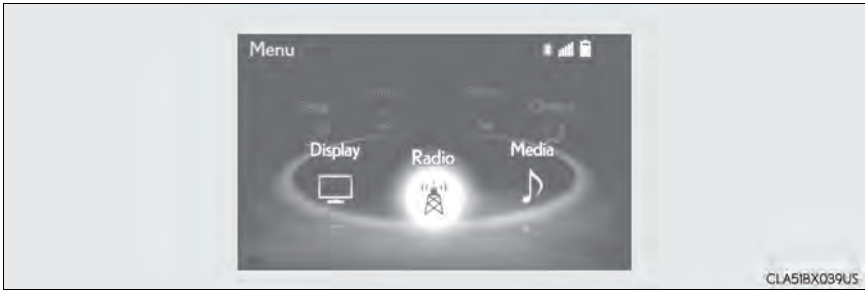
### Basic operation



- ① Display the "Source" screen or audio top screen
- ② Display the "Menu" screen
- ③ Back button  
Display the previous screen
- ④ Turn or move the controller to select a function and number.  
Move the controller to display the left or right side of the screen.  
Push the controller to enter the selected function and number.

## ■ “Menu” screen

To display the “Menu” screen, press the “MENU” button on the Lexus Display Audio controller.

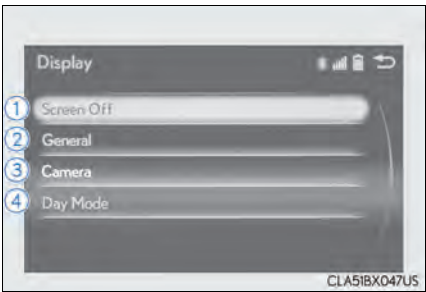


Button	Function
“Radio”	Display the radio top screen (→P.67)
“Media”	Display the media top screen (→P.68)
“Climate”	Display the air conditioning control screen (→P.70)
“Phone”	Display the phone top screen
“Connected Navi”*	If a turn-by-turn navigation application has been downloaded to a connected phone, the application will be displayed and can be used.
“Info”	Display the “Information” screen
“Setup”	Display the “Setup” screen
“Display”	Display the display settings screen

\*: Available in the 48 states, D.C. and Alaska

## ■ Screen for display settings

Go to “Display”: “MENU” button → “Display”



- ① Turn off screen.
- ② Adjust screen quality.
- ③ Adjust screen quality of the rear view monitor camera.
- ④ Change to day mode.

## Hands-free System For Cellular Phone (with Lexus Display Audio System)

### ■ How to register a Bluetooth® phone

Compatible Bluetooth®-equipped phones can be connected to the vehicle, enabling hands-free operation. Please refer to the cellular phone manufacturer's user guide for pairing procedures, or go to "[www.lexus.com/MobileLink](http://www.lexus.com/MobileLink)" (for U.S.A) for phone information.

- 1 Turn the Bluetooth® connection setting of your device set to on.
- 2 Go to "Bluetooth\* Setup": "MENU" button → "Setup" → "Bluetooth\*"
- 3 Move the controller to the left and then select "Add Device".



- 4 When this screen is displayed, search for the device name displayed on this screen on your Bluetooth® device.
- 5 Register the Bluetooth® device using your Bluetooth® device.


\*: Bluetooth is a registered trademark of Bluetooth SIG, Inc.

### ■ Registering favorites

You can register the desired contact from the phonebook. Up to 15 contacts per phone can be registered.

- 1 Go to "Add Favorite": "MENU" button → "Setup" → "Phone" → "Contacts/Call History" → "Add Favorite"
- 2 Choose the contact to register.

### ■ Dialing

- 1 Go to "Dial Pad": "MENU" button → "Phone" → "Dial Pad"
- 2 Input a phone number.
- 3 Press the off-hook switch on the steering wheel or select .

### ■ Dialing from the phonebook

- 1 Go to "Contacts": "MENU" button → "Phone" → "Contacts"
- 2 Choose the desired contact to call from the list.
- 3 Choose the number and then press the off-hook switch on the steering wheel or press the controller.



## ■ When the phonebook is empty

---

You can transfer the phone numbers in a Bluetooth® phone to the system.

Operation methods differ between PBAP (Phone Book Access Profile) compatible and PBAP incompatible Bluetooth® phones. If the cellular phone does not support either PBAP or OPP (Object Push Profile) service, you cannot transfer contacts.

- 1** Press the off-hook switch on the steering wheel.  
If the phonebook is empty, a message will be displayed.
- ▶ **For a PBAP compatible Bluetooth® phone and “Automatic Transfer” is off**
- 2** To enable automatic transfer of new contacts from a cellular phone every time it is connected, select “Always”.  
Select “Once” if you want to transfer new contacts from a cellular phone.
- ▶ **For a PBAP incompatible and OPP compatible Bluetooth® phone**
- 2** Select “Transfer” and operate your cellular phone to transfer new contacts from a cellular phone.  
Select “Add” if you want to add a new contact manually.

## ■ Dialing from favorites


---

You can make a call using numbers registered in the favorites.


- 1** Go to “Favorites”: “MENU” button → “Phone” → “Favorites”
- 2** Choose the desired contact to call from the list.
- 3** Choose the number and then press the off-hook switch on the steering wheel or press the controller.

## ■ To answer the phone

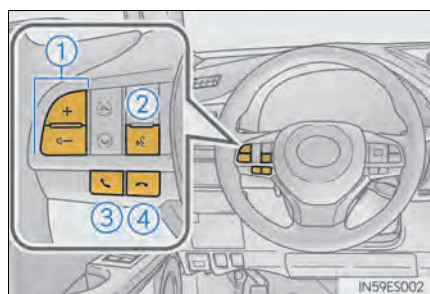


Press the off-hook switch on the steering wheel or select .

## ■ To refuse a call

Press the on-hook switch on the steering wheel or select .

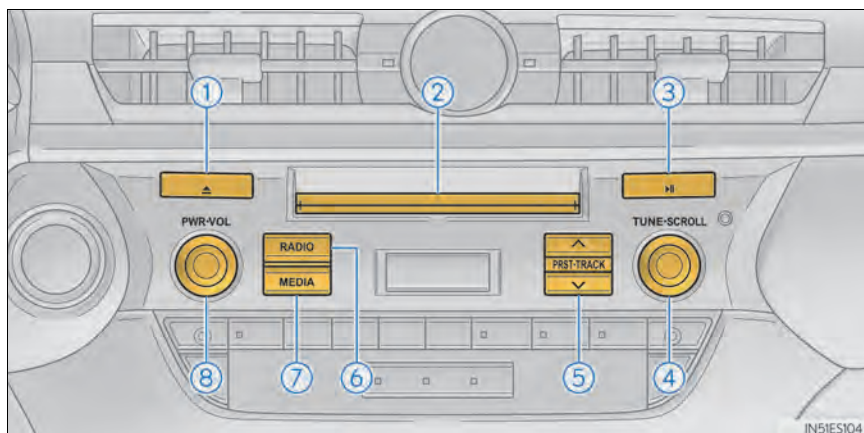
## ■ Operating a phone using the steering wheel switches



- ① Volume switch  
During an incoming call: Adjusts the ring tone volume  
During speaking on the phone: Adjusts in call volume  
The voice guidance volume cannot be adjusted using this button.
- ② Talk switch  
Press: Turns the voice command system on  
Press and hold: Turns the voice command system off
- ③ Off-hook switch
  - Start call
  - Receiving
  - Phone top screen display
- ④ On-hook switch
  - End call
  - Refuse call

## Audio System (with Lexus Display Audio System)

### ■ Lexus Display Audio operation buttons



- ① Eject a disc.
- ② Disc slot
- ③ Except radio and A/V mode: Pause or resume playing a track or file.  
Radio and A/V mode: Turn mute on/off.
- ④ “TUNE•SCROLL” knob  
Select a radio station band, track or file.
- ⑤ Select preset radio stations, or access a desired track or file.
- ⑥ Display the radio top screen.
- ⑦ Display the media top screen.
- ⑧ “PWR•VOL” knob  
Press to turn the audio system on/off, and turn to adjust the volume.

### ■ Using the steering wheel switches to change audio sources

Press the “MODE” switch when the audio system is turned on. The audio source changes each time the “MODE” switch is pressed.

## ■ Audio menu screen

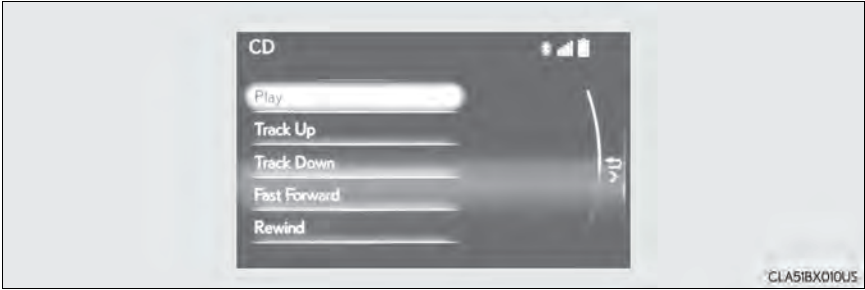
Go to audio menu screen: Move the controller to the left on the audio top screen

### ► Radio mode



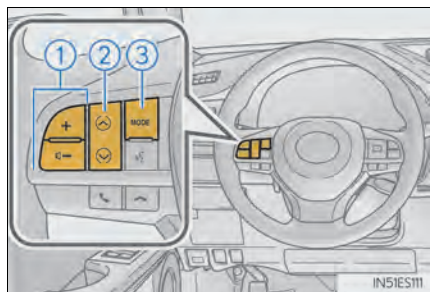
Button	Function	Target radio mode
"SCAN"	Scans for receivable stations	AM, FM
"SEEK"	Seeks a station of the nearest frequency (stops when a station is found)	AM, FM
"Tag"	Captures the song title and artist name information for potential purchase (when the "HD)" indicator on the selected station is appears)	FM
"Multicast"	Changes the channel of HD Radio (HD2, HD3, HD4 where applicable)	FM
"Traffic"	Seeks a station of the traffic announcement	FM
"HD Radio"	Selects to set the station list shows of HD radio on/off	AM, FM
"Radio Settings"	Changes radio settings	All mode
"Sound Settings"	Changes sound settings	All mode

► Media mode



Button	Function	Target audio source
"Play"	Plays or pauses a track/file	All media (except A/V)
"Pause"		
"Track Up"	Selects a track/file	All media (except A/V)
"Track Down"		
"File Up"		
"File Down"		
"Folder Up"	Selects a folder/album	MP3/WMA/AAC disc, USB
"Folder Down"		
"Fast Forward"	Selects and hold: Fast-forward or rewind a track/file	All media (except A/V)
"Rewind"		
"Repeat"	Selects a repeat mode	All media (except A/V)
"Random"	Selects a random/shuffle play mode	All media (except A/V)
"Shuffle"		
"Full Screen"	Selects a full screen mode	iPod, A/V
"Connect"	Connects a Bluetooth® device	Bluetooth®
"Cover Art Settings"	Changes the cover art settings	CD, MP3/WMA/AAC disc, Bluetooth®
"iPod Settings"	Changes iPod settings	iPod
"USB Settings"	Changes USB settings	USB
"External Video Settings"	Changes A/V settings	A/V
"Sound Settings"	Changes sound settings	All media

## ■ Operating the audio system using the steering wheel switches





- ① Volume switch
  - Press: Increases/decreases volume
  - Press and hold: Continuously increases/decreases volume
- ② Radio mode:
  - Press: Selects a radio station
  - Press and hold: Seeks up/down CD, MP3/WMA/AAC disc, Bluetooth<sup>®</sup>, iPod or USB mode:
- ③ "MODE" switch
  - Turns the power on, selects audio source
  - Press and hold this switch to mute or pause the current operation. To cancel the mute or pause, press and hold.

## Air Conditioning System





IN52ES129a

### ■ Adjusting the temperature setting

Press  to increase the temperature and  to decrease the temperature.

### ■ Adjusting the fan speed setting

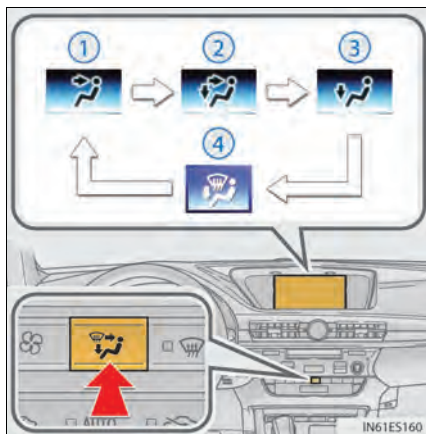
Press  to increase the fan speed and  to decrease the fan speed.

Press the "OFF" button to turn the fan off.

### ■ Change the airflow mode

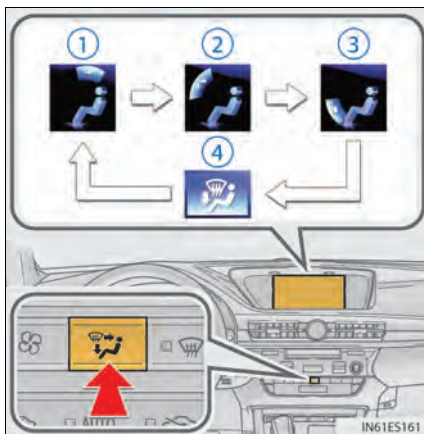
To change the air outlets, press .

#### ► Lexus Display Audio screen



IN61ES160

#### ► Navigation system screen



IN61ES161

The air outlets used are switched each time the button is pressed.

- ① Air flows to the upper body.
- ② Air flows to the upper body and feet.
- ③ Air flows to the feet.
- ④ Air flows to the feet and the windshield defogger operates.

## ■ Control screen

### ► Lexus Display Audio screen



- ① Adjust the left-hand side temperature setting
- ② Adjust the fan speed setting
- ③ Select to set auto mode on/off
- ④ Select to set cooling and dehumidification function on/off
- ⑤ Adjust the temperature for driver and passenger seats separately ("DUAL" mode) (→P.72)
- ⑥ Display the option control screen (→P.72)
- ⑦ Select the air flow mode
- ⑧ Adjust the right-hand side temperature setting


### ► Navigation system screen



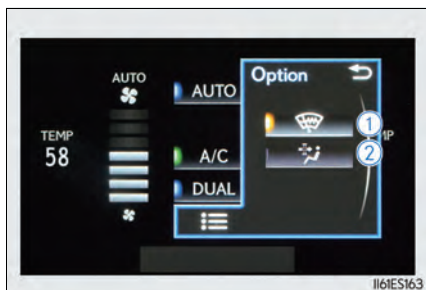
- ① Adjust the left-hand side temperature setting
- ② Adjust the fan speed setting
- ③ Select the air flow mode
- ④ Adjust the right-hand side temperature setting
- ⑤ Display the option control screen (→P.72)
- ⑥ Select to set automatic mode on/off
- ⑦ Select to set cooling and dehumidification function on/off
- ⑧ Adjust the temperature for driver and passenger seats separately ("DUAL" mode) (→P.72)



## ■ Option control screen

Select  on the air conditioning control screen to display the option control screen. The functions can be switched on and off.

### ► Lexus Display Audio screen



- ① Prevent ice from building up on the windshield and wiper blades (if equipped)
- ② Remove pollen from the air (micro dust and pollen filter)

### ► Navigation system screen



## ■ Using the automatic mode

Press the "AUTO" button to turn on the airflow and adjust the temperature setting.

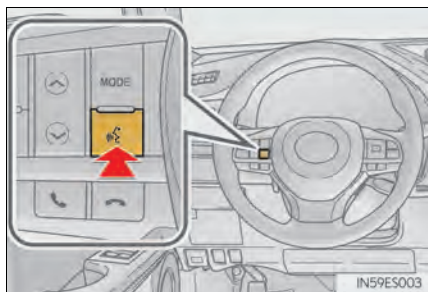
## ■ Adjusting the temperature for driver and passenger seats separately ("DUAL" mode)

To turn on the "DUAL" mode, perform any of the following procedures:

- Press the "DUAL" button.
- Select "DUAL" on the option control screen.
- Adjust the passenger's side temperature setting.

# Voice Command System

## Basic operation




- 1** Press the talk switch on the steering wheel.
- 2**
  - **If you know the command:**  
Press the talk switch again.
  - **If you do not know the command:**  
Follow the voice guidance to learn the command and then press the talk switch again.
- 3** Say a command after the beep.

Continue on to P.74-77 for a detailed list of Voice Commands for the following categories:

Basic.....	P.74
Apps.....	P.74
Navi .....	P.74
Phone.....	P.75
Radio .....	P.75
Audio.....	P.76
Info .....	P.76
Climate.....	P.77

### ■ Important voice commands information and tips

- Voice commands can be used while driving.
- You must wait until after the beep to say a command.
- If you know what command to use, you can press the talk switch at any time to interrupt the voice guidance.
- If a desired outcome is not shown, or if no selections are available, press  on the steering wheel to return to the previous screen.

**NOTE:** When entering voice commands you must wait until after the beep to speak.

## ■ Command list

### ► Basic

Command	Action
"Help"	Prompts voice guidance to offer examples of commands or operation methods
"Go Back"	Returns to the previous screen
"Go to <tab>"	Displays the command list of the selected tab
"More Hints"	Displays more commonly used commands
"Cancel"	Cancels the voice command system

### ► Apps (vehicles with navigation system)

Command	Action
"Launch <apps>"	Activates the LEXUS App Suite application

### ► Navi (vehicles with navigation system)

Command	Action
"Find <POI category>"	Displays a list of <POI category <sup>*</sup> > near the current position
"Enter an Address"	Enables setting a destination by saying the address
"Go Home"	Displays the route to home
"Pause Guidance"	Stops the route guidance
"Resume Guidance"	Resumes the route guidance
"Show <POI> icons"	Displays the specified POI icons
"Delete Destination"	Deletes the destination
"Previous Destination"	Displays previous destinations
"Destination Assist"	Connects the system to the LEXUS response center

<sup>\*</sup>: For example; "Gas stations", "Restaurants", etc.

► Phone

Command	Action
"Redial"	Places a call to the phone number of the latest outgoing call
"Call Back"	Places a call to the phone number of latest incoming call
"Show Recent Calls"	Displays the call history screen
"Dial <phone number>"	Places a call to the said phone number
"Call <contacts> <phonetypes>"	Place a call to the said phone type of the contact from the phone book
"Mobile Assistant"	Activates Apple's Siri® Eyes Free mode

► Radio

Command	Action
"Tune to <frequency> AM"	Changes the radio to the specified AM frequency
"Tune to <frequency> FM"	Changes the radio to the specified FM frequency
"Play <genre> station"	Changes the radio to an FM station of the specified genre
"Tune to FM <frequency> HD <number>"	Changes the radio to the specified HD radio station
"Tune to preset <number>"	Changes the radio to the specified preset radio station
"Tune to <name>"	Changes the radio to the satellite radio channel with the specified name
"Tune to channel <number>"	Changes the radio to the specified satellite radio channel number
"Play <genre> satellite station"	Changes the radio to a satellite radio channel of the specified genre
"AM Radio"	Selects AM radio mode
"FM Radio"	Selects FM radio mode
"Sirius XM"	Selects satellite radio mode

► **Audio**

Command	Action
"Play Playlist <name>"	Plays tracks from the selected playlist
"Play Artist <name>"	Plays tracks from the selected artist
"Play Song <name>"	Plays the selected track
"Play Album <name>"	Plays tracks from the selected album
"Turn Music On"	Turns the audio system on
"Turn Music Off"	Turns the audio system off
"Disc"	Selects the selected disc mode
"USB"	Selects USB audio mode
"iPod"	Selects iPod audio mode
"Bluetooth* Audio"	Selects Bluetooth® audio mode
"External"	Selects VTR mode
"Auxiliary"	Selects AUX audio mode

\*: Bluetooth is a registered trademark of Bluetooth SIG, Inc.

► **Info (vehicles with navigation system)**

Command	Action
"Destination Assist"	Connects the system to the Lexus response center
"Show Forecast"	Displays weather information
"Show Traffic"	Displays traffic information

► **Climate**

Command	Action
"Turn Climate Control On"	Turns air conditioning system on
"Turn Climate Control Off"	Turns air conditioning system off
"Warmer"	Increases the temperature of the air conditioning system
"Cooler"	Decreases the temperature of the air conditioning system
"<#> degrees"	Changes the set temperature of the air conditioning system to <#> degrees*

\*: Only within the possible temperature range of the air conditioning system

Commands relating to operation of the audio/visual and air conditioning systems can only be performed when the audio and air conditioning systems are turned on. Refer to the "OWNER'S MANUAL" and "NAVIGATION SYSTEM OWNER'S MANUAL".

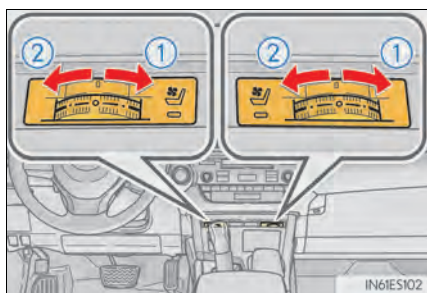
## Portable Audio Device Ports

These ports can be used to connect a portable audio device and listen to it through the vehicle's speakers.



Open the console box, open the cover and connect the portable audio device.

## Seat Heaters and Ventilators (if equipped)

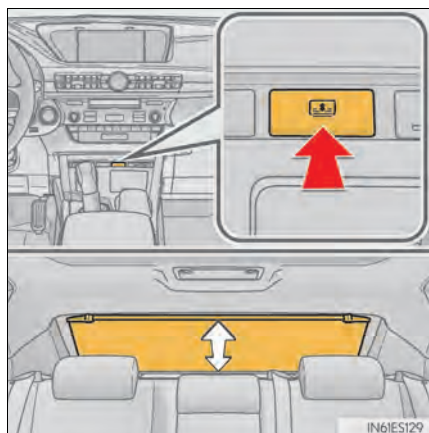


- ① Heats the seat  
The indicator light comes on.  
The higher the number of dots, the warmer the seat becomes.
- ② Blows air from the seat  
The indicator light comes on.  
The higher the number of dots, the stronger the airflow becomes.

## Rear Sunshade/Rear Door Sunshades (if equipped)

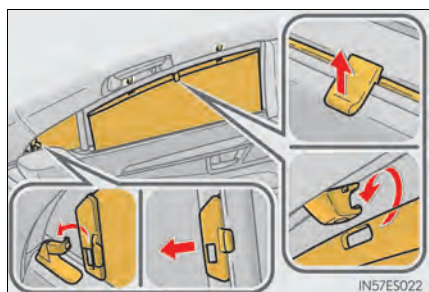
### Rear sunshade

The rear sunshade can be raised and lowered by operating the button shown below.



Raise/lower

### Rear door sunshades



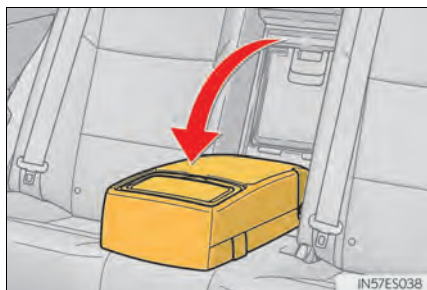
Pull the tab of the rear door sunshade and hook the sunshade on the anchors.

To retract the rear door sunshade, unhook the sunshade and retract it slowly.

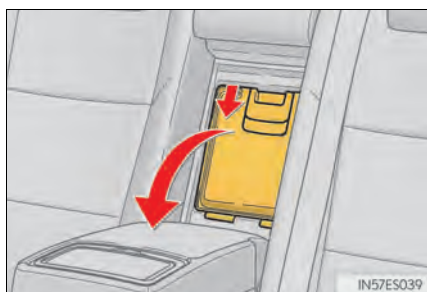


## Trunk Storage Extension

Long objects can be loaded into the vehicle by utilizing the trunk space and rear seat area.



- 1** Fold down the armrest.



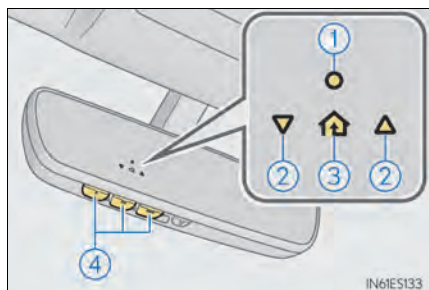
- 2** Fold down the handle and open the armrest door.

## Garage Door Opener

The garage door opener can be programmed to operate garage doors, gates, entry doors, door locks, home lighting systems, security systems, and other devices.

### ■ Programming HomeLink®

The HomeLink® wireless control system in your vehicle has 3 buttons which can be programmed to operate 3 different devices. Refer to the programming methods on the following pages to determine the method which is appropriate for the device.



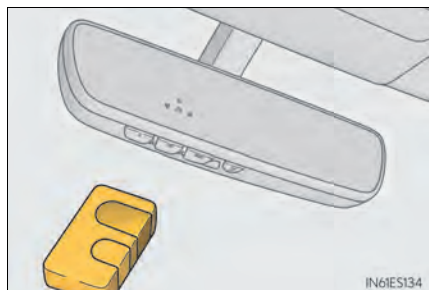
- ① HomeLink® indicator light
- ② Garage door operation indicators
- ③ HomeLink® icon

Illuminates while HomeLink® is operating.

- ④ Buttons

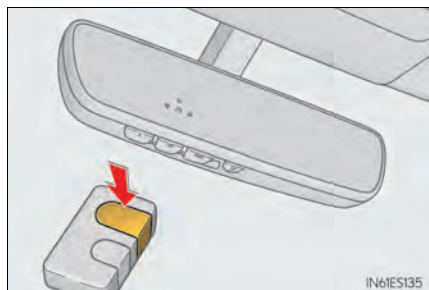
Steps 1 through 3 must be performed within 60 seconds, otherwise the indicator light will stop flashing and programming will not be able to be completed.

- 1 Press and release the HomeLink® button you want to program and check that the HomeLink® indicator light flashes (orange).



- 2 Point the remote control transmitter for the device at the rear view mirror, 1 to 3 in. (25 to 75 mm) from the HomeLink® buttons.

Keep the HomeLink® indicator light in view while programming.



- 3 Program a device.
  - **Programming a device other than an entry gate (for U.S.A. owners)**  
Press and hold the handheld transmitter button until the HomeLink® indicator light changes from slowly flashing orange to rapidly flashing green (rolling code) or continuously lit green (fixed code), then release the button.

► **Programming an entry gate (for U.S.A. owners)/Programming a device in the Canadian market**

Press and release the remote control transmitter button at 2 second intervals, repeatedly, until the HomeLink<sup>®</sup> indicator light changes from slowly flashing (orange) to rapidly flashing (green) (rolling code) or continuously lit (green) (fixed code).

- 4** Test the HomeLink<sup>®</sup> operation by pressing the newly programmed button and observing the indicator light:
- Indicator light illuminates: Programming of a fixed code device has completed. The garage door or other device should operate when a HomeLink<sup>®</sup> button is pressed and released.
  - Indicator light flashes rapidly: The garage door opener motor or other device is equipped with a rolling code. To complete programming, firmly press and hold the HomeLink<sup>®</sup> button for 2 seconds then release it.
  - If the garage door or other device does not operate, proceed to "Programming a rolling code system".
- 5** Repeat the steps above to program another device for any of the remaining HomeLink<sup>®</sup> buttons.

## ■ **Programming other devices**

---

For U.S.A. owners:

To program an entry gate, see the OWNER'S MANUAL.

To program other devices, contact your Lexus dealer.

For Canadian owners:

To program all other devices, follow the same procedure as for garage door programming.

## ■ **Operating HomeLink<sup>®</sup>**

---

Press the appropriate HomeLink<sup>®</sup> button. The HomeLink<sup>®</sup> indicator light should turn on.

## LEXUS Enform Safety Connect (for U.S.A., if equipped)

Safety Connect is a subscription-based telematics service that uses Global Positioning System (GPS) data and embedded cellular technology to provide safety and security features to subscribers. Safety Connect is supported by Lexus' designated response center, which operates 24 hours per day, 7 days per week.

Safety Connect service is available by subscription on select, telematics hardware-equipped vehicles.

### System components



- ① "SOS" button
- ② LED light indicators
- ③ Microphone

## ■ Services

---

Subscribers have the following Safety Connect services available:

### ● Automatic Collision Notification\*

In case of either airbag deployment or severe rear-end collision, the system is designed to automatically call the response center. The responding agent receives the vehicle's location and attempts to speak with the vehicle occupants to assess the level of emergency. If the occupants are unable to communicate, the agent automatically treats the call as an emergency, contacts the nearest emergency services provider to describe the situation, and requests that assistance be sent to the location.

\*: U.S. Patent No. 7,508,298 B2

### ● Stolen Vehicle Location

If your vehicle is stolen, Safety Connect can work with local authorities to assist them in locating and recovering the vehicle. After filing a police report, call the Safety Connect response center at 1-800-25-LEXUS (1-800-255-3987) and follow the prompts for Safety Connect to initiate this service.

In addition to assisting law enforcement with recovery of a stolen vehicle, Safety-Connect-equipped vehicle location data may, under certain circumstances, be shared with third parties to locate your vehicle. Further information is available at [Lexus.com](http://Lexus.com).

### ● Emergency Assistance Button (SOS)

In the event of an emergency on the road, push the "SOS" button to reach the Safety Connect response center. The answering agent will determine your vehicle's location, assess the emergency, and dispatch the necessary assistance required.

If you accidentally press the "SOS" button, tell the response-center agent that you are not experiencing an emergency.

### ● Enhanced Roadside Assistance

Enhanced Roadside Assistance adds GPS data to the already included warranty-based Lexus roadside service.

Subscribers can press the "SOS" button to reach a Safety Connect response-center agent, who can help with a wide range of needs, such as: towing, flat tire, fuel delivery, etc. For a description of the Roadside Assistance services and their limitations, please see the Safety Connect Terms and Conditions, which are available at [Lexus.com](http://Lexus.com).

## ■ Subscription

---

After you have signed the Telematics Subscription Service Agreement and are enrolled, you can begin receiving services.

A variety of subscription terms are available. Contact your Lexus dealer, call 1-800-25-LEXUS (1-800-255-3987) or push the "SOS" button in your vehicle for further subscription details.

## **Lexus Enform (for U.S.A., if equipped)**

Lexus Enform is a service that includes Safety Connect, Service Connect, Remote, Destinations and App Suite.

For details, refer to the “OWNER’S MANUAL” and “NAVIGATION SYSTEM OWNER’S MANUAL”.

### **■ Function achieved by using a cellular phone (with navigation system)**

---

#### **■ Services**

Of the functions included with Lexus Enform, only LEXUS App Suite can be achieved by using a cellular phone.

LEXUS App Suite is a service that enables the usable contents of a cellular phone to be displayed on and operated from the navigation screen. Before LEXUS App Suite can be used, a few settings need to be performed.

#### **● LEXUS App Suite**

When LEXUS App Suite is activated, an application may need to update. By updating, an application can be kept the latest version. To updating the application, it is necessary to download the updated data and install it.

#### **■ Subscription**

LEXUS App Suite will be available on a trial period included upon purchase of a new vehicle. User registration is required to start using the service.

When a trial period has elapsed after purchasing a new vehicle, a fee will be charged to renew the contract. Services requiring a separate contract can also be used. For details, refer to <http://www.lexus.com/enform/> or call 1-800-255-3987.

### **■ Function achieved by using DCM and the navigation system (with navigation system)**

---

#### **■ Services**

Of the functions included with Lexus Enform and LEXUS Enform Destinations (Destination Assist) can be achieved by making DCM cooperate with the navigation system.

These are subscription-based telematics services that use Global Positioning System (GPS) data, embedded cellular technology to provide safety and security as well as convenience features to subscribers. The services are supported by Lexus’ designated response center, which operates 24 hours a day, 7 days a week.

The services are available by subscription on select, telematics hardware-equipped vehicles.

#### **● Destination Assist**

Destination Assist provides you with live assistance for finding destinations via the Lexus response center. You can request either a specific business, address, or ask for help locating your desired destination by category, such as restaurants, gas stations, shopping centers or other points of interest (POI).

After you tell the agent your choice of destination, its coordinates are sent wirelessly to your vehicle’s navigation system.

## ■ Subscription

After you have signed the Telematics Subscription Service Agreement and are enrolled, you can begin receiving services. A variety of subscription terms are available.

Contact your Lexus dealer, call 1-800-25-LEXUS (1-800-255-3987), or select the "Destination Assist" in your vehicle for further subscription details.

## ■ Function achieved by using DCM

---

### ■ Services

Of the functions included with Lexus Enform Safety Connect, Safety Connect can be achieved by using DCM.

- Lexus Enform Safety Connect (→P.83)

## ■ LEXUS Enform Remote

---

### ■ Services

LEXUS Enform Remote is a cellular phone application that lets you view and remotely control certain aspects of your vehicle.

For details about the functions and services of this application, refer to <http://www.lexus.com/enform/>. For further details, contact your Lexus dealer.

Function of the Lexus Enform Remote is achieved by using an embedded cellular device in the vehicle (DCM: Data Communication Module).

### ■ Subscription

→P.86

## ■ LEXUS Enform Service Connect

---

### ■ Services

LEXUS Enform Service Connect uses embedded telematics hardware to collect and transmit vehicle data that allows Lexus to provide:

- Vehicle Health Report (VHR)  
(Safety Recalls, Service Campaigns, Current Vehicle Alerts, Required Maintenance and Vehicle Condition Status)
- Maintenance Notifications
- Vehicle Alert Notifications

For details about this service and how to register, refer to

<http://www.lexus.com/enform/>.

The Lexus Enform Service Connect is achieved by using a Data Communication Module (DCM) built into the vehicle.

### ■ Subscription

→P.86

## ■ XM Satellite Radio

An XM Satellite Radio is a tuner designed exclusively to receive broadcasts provided under a separate subscription.

For details, refer to the “OWNER’S MANUAL” and “NAVIGATION SYSTEM OWNER’S MANUAL”.

### ■ Subscription

For XM Services requiring a subscription (such as XM Radio), the following paragraph shall be included.

Required XM Radio monthly subscriptions sold separately after trial period. Subscription fee is consumer only. All fees and programming subject to change. Subscriptions are subject to the Customer Agreement available at [www.siriusxm.com](http://www.siriusxm.com). (U.S.A.) or [www.xmradio.ca](http://www.xmradio.ca) (Canada) XM service only available in the 48 contiguous United States and 10 Canadian provinces.

For more information, program schedules, and to subscribe or extend subscription after complimentary trial period; more information is available at:

#### ►U.S.A. Customers:

Visit [www.siriusxm.com](http://www.siriusxm.com) or call 1-877-447-0011

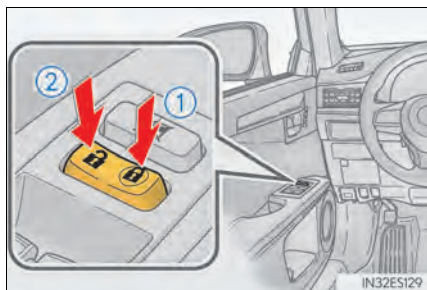
#### ►Canadian Customers:

Visit [www.xmradio.ca](http://www.xmradio.ca) or call 1-877-438-9677



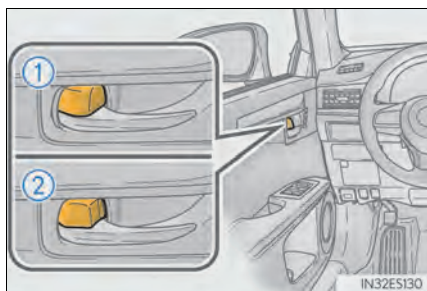
## Door Locks

### ■ Door lock switch



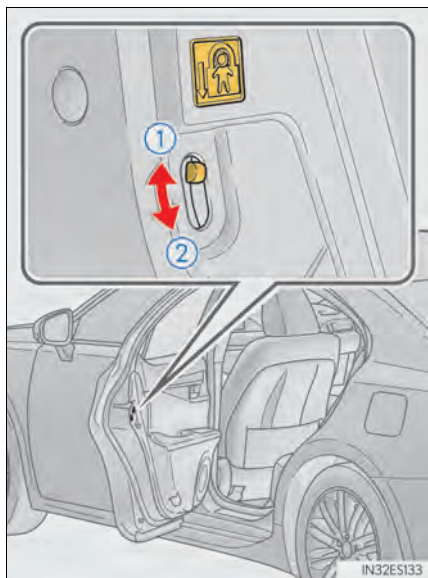
- ① Locks all the doors
- ② Unlocks all the doors

### ■ Inside lock button



- ① Locks the door
  - ② Unlocks the door
- The front doors can be opened by pulling the inside handle even if the lock buttons are in the lock position.

## ■ Rear door child-protector lock



The door cannot be opened from inside the vehicle when the lock is set.

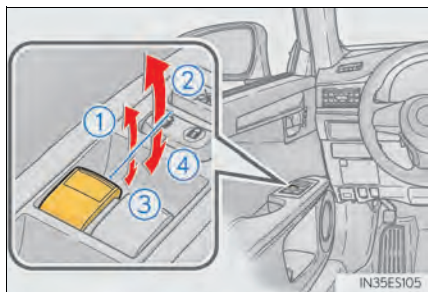
① Unlock

② Lock

These locks can be set to prevent children from opening the rear doors. Push down on each rear door switch to lock both rear doors.

## ■ Power Windows

### ■ Power window switches



① Closing

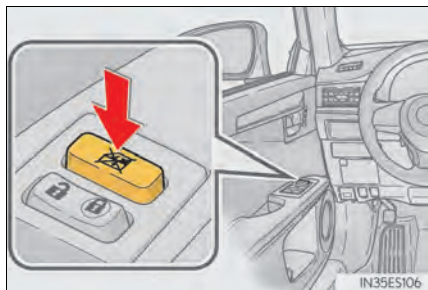
② One-touch closing\*

③ Opening

④ One-touch opening\*

\*: To stop the window partway, operate the switch in the opposite direction.

### ■ Window lock switch



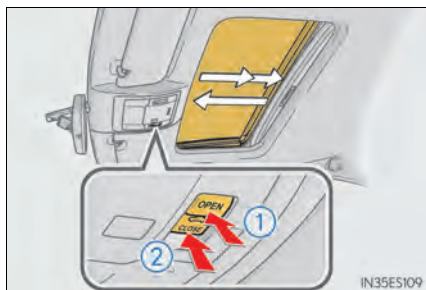
Press the switch down to lock the passenger window.

Use this switch to prevent children from accidentally opening or closing a passenger window.

# Moon Roof

## Opening and closing

### ► Standard type



- ① Opens the moon roof\*

The moon roof stops slightly before the fully open position to reduce wind noise.

Press the switch again to fully open the moon roof.

- ② Closes the moon roof\*

\*: Lightly press either way of the moon roof switch to stop the moon roof partway.

### ► Glass type



- ① Opens the moon roof

- ② Closes the moon roof (push and hold)\*

\*: The moon roof stops once. Push and hold the switch again to fully close.

## ■ Tilting up and down

### ► Standard type



① Tilts the moon roof up\*

② Tilts the moon roof down\*

\*: Lightly press either way of the moon roof switch to stop the moon roof partway.

### ► Glass type



① Tilts the moon roof up\*

② Tilts the moon roof down (push and hold)

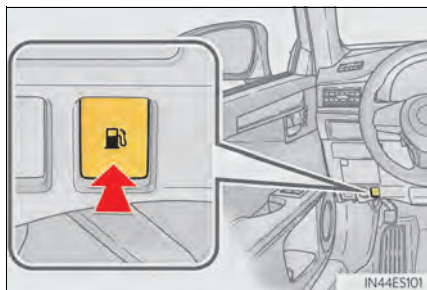
\*: Lightly press either way of the moon roof switch to stop the moon roof partway.

## Fuel Tank Cap

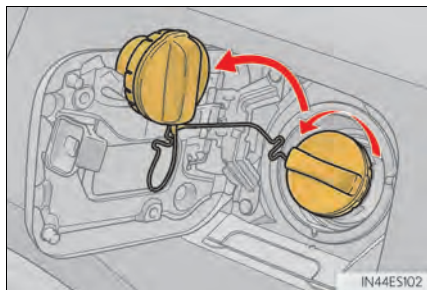
### ■ Before refueling the vehicle

- Turn the engine switch off and ensure that all the doors and windows are closed.
- Confirm the type of fuel.

### ■ Opening the fuel tank cap



- 1** Press the opener switch to open the fuel filler door.

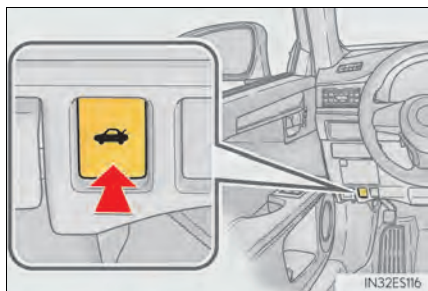


- 2** Turn the fuel tank cap slowly to open and hang it on the back of the fuel filler door.

## Trunk

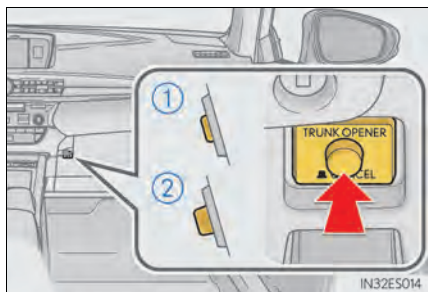
### ■ Opening the trunk

#### ● From inside the vehicle



Press the opener switch.

If the vehicle is equipped with a power trunk opener and closer, the trunk lid automatically opens fully.



Turn the main switch in the glove box off to disable the trunk opener.

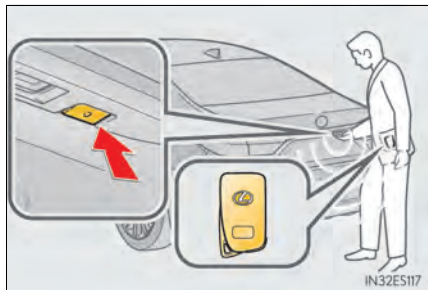
① On

② Off

The trunk lid cannot be opened even with the wireless remote control or the trunk release button.

#### ● From outside the vehicle

- Smart access system with push-button start



While carrying the electronic key, press the button on the trunk lid.

When all the doors are unlocked with the power door lock system, the trunk can be opened without carrying the electronic key.

If the vehicle is equipped with power trunk opener and closer, the trunk lid automatically opens fully.

- Wireless remote control



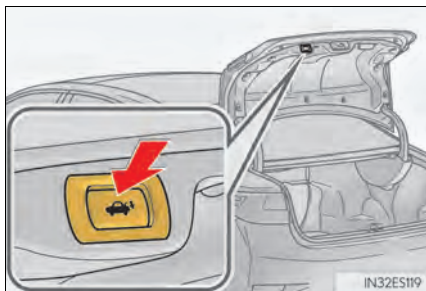
Press and hold the switch

If the vehicle is equipped with a power trunk opener and closer, the trunk lid automatically opens fully.

## ■ Trunk easy closer (vehicles with power trunk opener and closer)

In the event that the trunk lid is left slightly open, the trunk easy closer will automatically close it to the fully closed position.

## ■ Trunk closer switch (vehicles with power trunk opener and closer)



Pressing the switch closes the trunk lid automatically. (A buzzer sounds.)

Pressing the switch while the trunk lid is closing opens the trunk lid again.

What to do if...

List of Warning/Indicator Lights

Immediately stop the vehicle in a safe place and contact your Lexus dealer. Continuing to drive the vehicle may be dangerous.



(U.S.A.)

Brake system warning light



(Canada)

Have the vehicle inspected by your Lexus dealer immediately.



(U.S.A.)

Malfunction indicator lamp



(Canada)



SRS warning light



(U.S.A.)

ABS warning light



(Canada)



PCS warning light\*<sup>1</sup>



Electric power steering system warning light



Slip indicator light



Tire pressure warning light



(Blinking and then continuously on)

Follow the correction procedures.



Low fuel level warning light



Seat belt reminder light



Master warning light



Tire pressure warning light\*<sup>2</sup>



(Illuminates without blinking)



"AFS OFF" indicator\*<sup>1</sup>



(Flashes)

For further information, refer to the OWNER'S MANUAL.



# What to do if...

See the OWNER'S MANUAL		
	Turn signal indicator	 Intuitive parking assist indicator <sup>*1</sup>
	Headlight indicator (U.S.A.)	 Slip indicator light (Flashes)
	Tail light indicator (Canada)	 VSC OFF indicator
	Headlight high beam indicator	 PCS warning light <sup>*1</sup>
	Automatic High Beam indicator <sup>*1</sup>	 BSM outside rear view mirror indicators <sup>*1</sup>
	Fog light indicator	 "AIR BAG ON/OFF" indicator
	Eco Driving Indicator Light	
	Cruise control indicator	 (U.S.A.) Parking brake indicator
	Radar cruise control indicator <sup>*1</sup>	 (Canada)
	Cruise control "SET" indicator	 Low outside temperature indicator
	LDA indicator <sup>*1</sup>	
For further information, refer to the OWNER'S MANUAL.		

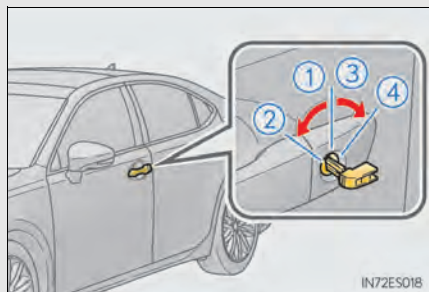
<sup>\*1</sup>: If equipped

<sup>\*2</sup>: It also comes on due to natural causes such as natural air leaks and tire inflation pressure changes caused by temperature. Adjust the tire inflation pressure to the specified level. The light will turn off after a few minutes. In case the light does not turn off even if the tire inflation pressure is adjusted, have the system checked by your Lexus dealer.

## What to do if...

### If the electronic key does not operate properly

#### ■ Unlocking and locking the doors

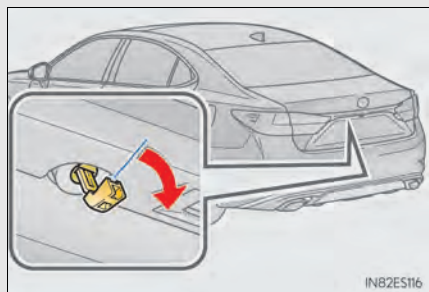


Use the mechanical key (→P.14) in order to perform the following operations:

- ① Locks all the doors
- ② Closes the windows and moon roof\* (turn and hold)
- ③ Unlocks the door  
Turning the key rearward unlocks the driver's door. Turning the key once again within 5 seconds unlocks the other doors.
- ④ Opens the windows and moon roof\* (turn and hold)

\*: This setting must be customized at your Lexus dealer.

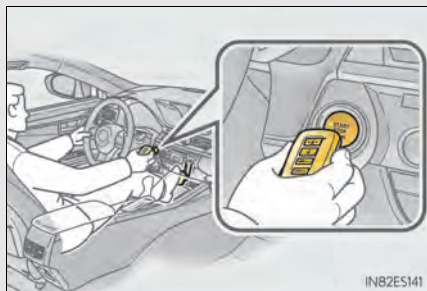
#### ■ Unlocking the trunk




Turn the mechanical key clockwise to open.  
An alarm will sound if the alarm is set.  
(→P.16)

## What to do if...

### Starting the engine



- 1** Ensure that the shift lever is in P and depress the brake pedal.
- 2** Touch the Lexus emblem side of the electronic key to the engine switch. The engine switch will turn to IGNITION ON mode. When the smart access system with push-button start is deactivated in customization setting, the engine switch will turn to ACCESSORY mode.
- 3** Firmly depress the brake pedal and check that  is shown on the multi-information display.
- 4** Press the engine switch.

In the event that the engine still cannot be started, contact your Lexus dealer.

If the electronic key battery becomes depleted, replace it with a new battery. For instructions on replacing the battery, refer to the OWNER'S MANUAL. If you need further assistance, contact your Lexus dealer.

### If the engine doesn't start

Make sure that the correct operating procedures have been followed.

**Brake pedal**

Make sure that the brake pedal is firmly depressed when attempting to start the engine. (→P.22)

If the engine still does not start, see the OWNER'S MANUAL for more information or contact your Lexus dealer.

## Memo



## Memo



### **Your Lexus dealer**

Your Lexus dealer will provide quality maintenance and any other assistance you may require.

If there is not a Lexus dealer near you, please call the following number:

#### **■ U.S. OWNERS**

- In the U.S. mainland or Canada:

Lexus Roadside Assistance

**1-800-25-LEXUS** or **1-800-255-3987** (Toll-Free)

- In Hawaii:

Servco Automotive Roadside Assistance/Customer Services

**1-800-25-LEXUS** or **1-800-255-3987** (Toll-Free)

#### **■ CANADIAN OWNERS**

- In Canada or the U.S. mainland:

Lexus Roadside Assistance/Customer Service

**1-800-26-LEXUS** or **1-800-265-3987** (Toll-Free)

Please access our **websites** for further information.

- The U.S. mainland: [www.lexus.com](http://www.lexus.com)

- Hawaii: [www.servcolexus.com](http://www.servcolexus.com)

- Canada: [www.lexus.ca](http://www.lexus.ca)

©2017 TOYOTA MOTOR CORPORATION

All rights reserved. This material may not be reproduced or copied, in whole or in part, without the written permission of Toyota Motor Corporation.



Owner's Manual Quick Guide:

Publication No. OM06136U

Part No. 01999-06136

Printed in the U.S.A. 01-1709-00